

2022

STREET & TRACK
SPRING-SUMMER EDITION

1968

RACING HERITAGE PROJECT



STREET



TRACK





TUNING STEERING WHEELS



1968

INSPIRED BY THE MOST FAMOUS MOMO STEERING WHEELS IN MOTORSPORT HISTORY, THE "1968" IS BORN. EXTRA-SMOOTH BLACK LEATHER, BLACK SPOKES WITH ANNUAL LIMITED EDITION, WHITE PARALLEL STITCHING, SPECIAL ALUMINUM PLATE WITH PROGRESSIVE NUMBERING, NEW MOMO HERITAGE LOGO RED HORN BUTTON, Ø 350 mm.



PROTOTIPO BLACK EDITION

PREMIUM BLACK LEATHER, NEW MATT BLACK HORN BUTTON WITH GLOSSY BLACK LOGO, EXCLUSIVE "PROTOTIPO BLACK EDITION" GLOSSY BLACK MARKING ON THE LOWER SPOKE, BLACK CROSS STITCHING. NEW EXCLUSIVE DARK LOOK PACKAGING. Ø 350 mm



PROTOTIPO 370

PROTOTIPO, MOMO'S MOST ICONIC STEERING WHEEL, IS NOW AVAILABLE WITH A DIAMETER INCREASED TO 370 mm. BLACK LEATHER, BLACK OR SILVER SPOKES, PARALLEL WHITE STITCHING. Ø 370 mm



COMPETITION

BLACK AIRLEATHER, BLACK SPOKES, BLACK ALUMINUM RING. Ø 350 mm



TUNER

BLACK LEATHER, ANTHRACITE SPOKES & ALUMINUM RING, PARALLEL BLACK STITCHING. BLACK LEATHER, BLACK SPOKES & ALUMINUM RING, RED PARALLEL STITCHING. Ø 320 mm / Ø 350 mm



ULTRA

BLACK PREMIUM MICROFIBER GRIP FEATURING THE SILHOUETTES OF THE MOST FAMOUS RACETRACKS OF THE WORLD. BLACK, RED OR BLUE SPOKES WITH LASER ETCHED MOMO LOGOS. DOUBLE YELLOW, RED OR BLUE LEATHER INSERTS. Ø 350 mm / DISH 90 mm



JET

BLACK LEATHER, BLACK AIRLEATHER GRIP, BLACK SPOKES, CARBON RING. Ø 320 mm / Ø 350 mm



TREK R

BLACK LEATHER, BLACK AIRLEATHER, SILVER AND CHROME SPOKES. Ø 350 mm



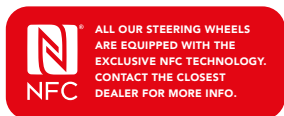
TREK ALcantARA

BLACK LEATHER, BLACK AIRLEATHER, BLACK ALcantARA, EMBROIDERED YELLOW MOMO LOGO ON TOP, SILVER AND BLACK ALcantARA SPOKES. Ø 350 mm



TEAM

BLACK LEATHER, BLACK AIRLEATHER, BLACK SPOKES. Ø 280 mm / Ø 300 mm



NERO

BLACK LEATHER, BLACK SUEDE, BLACK SPOKES, CHROME INSERTS. Ø 350 mm



MILLENNIUM

BLACK LEATHER, BLACK AIRLEATHER, SILVER SPOKES, CHROME INSERTS. Ø 320 mm / Ø 350 mm



MILLENNIUM SPORT

BLACK LEATHER, BLACK AIRLEATHER, SILVER SPOKES, GREY LEATHER INSERTS, CHROME INSERTS. Ø 350 mm





100% H A N D M A D E I N I T A L Y

TUNING STEERING WHEELS



NEW

NEW

MONTECARLO

BLACK LEATHER, BLACK SPOKES,
BLACK, YELLOW OR RED PARALLEL STITCHING, MATCHING COLOR HORN BUTTON.
Ø 320 mm (BLACK VERSION ONLY) / Ø 350 mm (ALL VERSIONS)



PROTOTIPO CARBON 6C

PREMIUM BLACK LEATHER, CARBON SPOKES,
GREY LUXURY CROSS STITCHING.
Ø 350 mm



PROTOTIPO

BLACK LEATHER, BLACK OR SILVER SPOKES,
PARALLEL WHITE STITCHING.
Ø 350 mm



DARK FIGHTER WOOD

BLACK AIRLEATHER, MAHOGANY
WOOD ZEBRANO, BLACK SPOKES.
Ø 350 mm



DARK FIGHTER

BLACK AIRLEATHER, BLACK ALCANTARA,
BLACK SPOKES.
Ø 350 mm



QUARK

BLACK POLYURETANE, BLACK SPOKES,
BLACK OR RED LEATHER INSERTS.
Ø 350 mm



COMPETITION EVO

BLACK AIRLEATHER, SILVER SPOKES,
EMBROIDERED YELLOW MOMO LOGO.
Ø 320 mm



GOTHAM

BLACK LEATHER, BLACK SPOKES,
DARK CHROME INSERTS,
EMBROIDERED "GOTHAM" LOGO.
Ø 350 mm



DRIFTING

BLACK LEATHER, ORANGE OR ANTHRACITE SPOKES,
EMBROIDERED "DRIFTING" LOGO,
DOUBLE ORANGE OR YELLOW LEATHER INSERTS.
Ø 350 mm / DISH 90 mm



DRIFTING 33

BLACK LEATHER, BLACK SPOKES, EMBROIDERED "DRIFTING" LOGO,
TOP RED OR BLUE LEATHER INSERTS, MATCHING COLOR HORN BUTTON.
Ø 330 mm / DISH 88 mm



EAGLE

BLACK AIRLEATHER, BLACK LEATHER,
ANTHRACITE SPOKES,
ANTHRACITE ALUMINUM RING.
Ø 350 mm



INSTALLATION HUB

CHECK OUR APPLICATION LIST TO VERIFY
YOUR VEHICLE'S HUB REQUIREMENT.



HORN BUTTONS

ONE OF MOMO'S MOST
ICONICAL ELEMENTS
DESERVES A SPECIAL
PACKAGING:
AN ELEGANT TRANSPARENT
LITTLE BOX CONTAINS
OUR RANGE OF STEERING
WHEELS' HORN BUTTONS.

NEW



GLOSSY YELLOW
BLACK LOGO



GLOSSY RED
CHORMED LOGO



GLOSSY BLUE
CHROMED LOGO



GLOSSY ANTHRACITE
CHROMED LOGO



MATT BLACK
CHROMED LOGO



GLOSSY BLACK
YELLOW LOGO



GLOSSY BLACK
YELLOW/CHROMED LOGO



SHINY SILVER
CHROMED LOGO



SHINY SILVER
YELLOW LOGO



GLOSSY BLACK
YELLOW
HERITAGE LOGO



TUNING SHIFT KNOBS



ULTRA

THE PERFECT MATCH FOR THE ULTRA STEERING WHEEL. BLACK PREMIUM MICROFIBER GRIP FEATURING THE SILHOUETTES OF THE MOST FAMOUS RACETRACKS OF THE WORLD. YELLOW LEATHER INSERT. BLACK, RED AND BLUE ANODIZED ALUMINUM BODY WITH LASER ETCHED MOMO LOGOS.



SK50

TRUE RACING LOOK WITH THE FULL ALUMINUM BODY-MACHINED SK50 SHIFT KNOB. SILVER, ANTHRACITE, BLACK, RED, BLUE AND ORANGE GLOSSY ANODIZED ALUMINUM. THE MOMO ARROW LOGO PROVIDES A RACE-INSPIRED TOUCH.



SK51

AVAILABLE IN SILVER, ANTHRACITE AND BLACK GLOSSY ANODIZED ALUMINUM, 6 UPPER SCREWS AND GROOVES ALONG THE CIRCUMFERENCE FOR IMPROVED AESTHETICS. THE MOMO ARROW LOGO PROVIDES A RACE-INSPIRED TOUCH.



COMBAT EVO

SMART ERGONOMIC DESIGN, TOP GRAIN BLACK LEATHER WITH SILVER, BLUE, RED, CHROMED OR CARBON EFFECT INSERT, BLACK OR CHROME COLLAR. STITCHING MATCHES THE RESPECTIVE MOMO COMBAT EVO INSERTS, ALL FEATURE AN ALUMINUM MOMO ARROW EMBLEM.



NERO

TOP GRAIN BLACK LEATHER, GLOSSY BLACK AND RUBBERIZED MOMO LOGO INSERT. ALSO AVAILABLE FOR "REVERSE LIFT SYSTEM".

GOTHAM

TOP GRAIN BLACK LEATHER, DARK CHROME AND RUBBERIZED MOMO LOGO INSERT. ALSO AVAILABLE FOR "REVERSE LIFT SYSTEM".



ANATOMICO

PREMIUM TOP GRAIN BLACK LEATHER WITH BLACK STITCHING, AVAILABLE IN BOTH TALL AND SHORT SIZE.



RACE AIRLEATHER

BLACK AIRLEATHER WITH MACHINED ALUMINUM TOP AND COLLAR, BRANDED MOMO BLACK CAP ON TOP.



RACE AIRLEATHER ALUMINUM

BLACK AIRLEATHER INSERT WITH MACHINED ALUMINUM TOP, BASE AND COLLAR. BRANDED MOMO BLACK CAP ON TOP. ALSO AVAILABLE FOR "REVERSE LIFT SYSTEM".





DRIVING

RACING STEERING WHEELS



MOD. 08
BLACK SUEDE OR BLACK LEATHER,
BLACK SPOKES - Ø 350 mm



MOD. 08
BLACK SUEDE OR BLACK LEATHER,
BLUE SPOKES - Ø 350 mm



DRIFTING
BLACK SUEDE, ANTHRACITE SPOKES,
YELLOW LEATHER MARKERS ON THE TOP.
Ø 330 mm



MOD. 07
BLACK SUEDE OR BLACK LEATHER,
BLACK SPOKES - Ø 350 mm



MOD. 78
BLACK SUEDE OR BLACK LEATHER,
BLACK SPOKES - Ø 350 mm / Ø 320 mm



MOD. 69
BLACK SUEDE OR BLACK LEATHER,
BLACK SPOKES - Ø 350 mm



MOD. 88
BLACK SUEDE OR BLACK LEATHER,
BLACK SPOKES - Ø 320 mm / Ø 350 mm



MOD. 02
BLACK SUEDE OR BLACK LEATHER,
BLACK SPOKES - Ø 350 mm



MOD. 03
BLACK SUEDE OR BLACK LEATHER,
BLACK SPOKES - Ø 350 mm




MOD. 03
BLACK SUEDE OR BLACK LEATHER,
BLUE SPOKES - Ø 350 mm



MOD. 80
BLACK SUEDE OR BLACK LEATHER,
BLACK SPOKES, WITH BUTTONS - Ø 350 mm



MOD. 26
BLACK SUEDE, BLACK SPOKES.
Ø 260 mm / Ø 280 mm / Ø 290 mm

 ALL OUR STEERING WHEELS ARE EQUIPPED WITH THE EXCLUSIVE NFC TECHNOLOGY. CONTACT THE CLOSEST DEALER FOR MORE INFO.



CARBON PLATE 4
GENUINE CARBON FIBER, ALLOWS UP TO 4
BUTTONS (NOT INCLUDED), 6 DRILL
POINTS STANDARD HUB ATTACHMENT.



MOD. 11
BLACK SUEDE, BLACK SPOKES.
Ø 260 mm / Ø 280 mm



MOD. 31
BLACK SUEDE, BLACK SPOKES.
Ø 320 mm / Ø 340 mm

PASSION



RACING STEERING WHEELS



MOD. 30 B
BLACK SUEDE, BLACK SPOKES.
WITH BUTTONS - Ø 320 mm



MOD. 30
BLACK SUEDE, BLACK SPOKES.
Ø 320 mm



MOD. 27
BLACK SUEDE, BLACK SPOKES.
Ø 270 mm / Ø 290 mm



MOD. 12
BLACK SUEDE, BLACK SPOKES.
Ø 250 mm / Ø 260 mm



MOD. 29
BLACK SUEDE, BLACK SPOKES.
Ø 270 mm



MOD. 101
BLACK SUEDE, BLACK SPOKES.
Ø 290 mm



MOD. 27/C
BLACK SUEDE, BLACK SPOKES.
Ø 270 mm



MOD. 12/C
BLACK SUEDE, BLACK SPOKES.
Ø 250 mm

DRIVERS' EQUIPMENT



RED,
BLACK INSERTS,
WHITE PIPING.



WHITE,
BLACK INSERTS,
RED PIPING.

BLUE,
BLACK INSERTS,
WHITE PIPING.

BLACK,
GREY INSERTS,
WHITE PIPING.



WEIGHT
320
gr/mq

FABRIC
LAYERS
3

FABRIC
NOMEX
TELA 110

48
64



WEIGHT
280
gr/unit

38
46

CORSA EVO

MOMO'S CORSA EVO RACE SUIT IS THE FIRST IN OUR NEW LEADING-EDGE MOTORSPORTS SAFETY PRODUCT LINE. DESIGNED WITH ELITE RACING DRIVERS IN MIND, THE CORSA EVO INCORPORATES THE LATEST SAFETY AND PERFORMANCE TECHNOLOGY. CONSTRUCTED OF 320 gr/mq NOMEX MATERIAL FOR AN ULTRA-LIGHTWEIGHT AND BREATHABLE FEEL, THIS SUIT IS APPROVED BY FIA 8856-2000 AND SFI 3.2A/5 STANDARDS FOR USE AT EVEN THE HIGHEST LEVEL OF COMPETITION. THE UNIQUELY ITALIAN DESIGN OFFERS AN ERGONOMIC FIT WHILE MAXIMIZING DRIVER COMFORT. PROPRIETARY PARABOLIC LUMBAR AND KNEE GUSSETING PROVIDE RELIEF IN THE KEYSTRESS AREAS DRIVERS MIGHT ENCOUNTER AFTER EXTENDED PERIODS BEHIND THE WHEEL. FLOATING ARM GUSSETS PROVIDE FULLER RANGE OF MOTION WHILE THE ANATOMICAL SLEEVE PATTERNING HELPS MINIMIZE MATERIAL TWIST AND BUNCHING. THE MOMO CORSA EVO RACE SUIT IS AVAILABLE NOW FROM MOMO MOTORSPORTS DEALERS NATIONWIDE IN FOUR DISTINCTIVE COLOR COMBINATIONS IN SIZES 48 TO 64 TO FIT DRIVERS OF ALL STATURE.

CORSA LITE

MOMO CORSA LITE IS THE NEW DRIVER BOOT DEVELOPED BY MOMO IN FIRE RESISTANT, BREATHABLE FABRIC, WITH CANGAROO LEATHER INSERTS. IS ENGINEERED AND PRODUCED IN ACCORDANCE WITH THE NEW FIA 8856-2018 REGULATION. FEATURING AN EXTRAORDINARY 280 gr WEIGHT* MOMO CORSA LITE ESTABLISHES ITSELF AMONG THE LIGHTEST PRODUCTS ON THE MARKET: THIS AS THE RESULT OF AN ACCURATE RESEARCH OF EVERY PRODUCT'S ELEMENT AND A DEMANDING MATERIALS' SELECTION. THE MAXIMUM WEIGHT'S REDUCTION IS ACHIEVED ALSO THANKS TO THE GRAPHIC ELEMENTS, ENTIRELY PRINTED. COLOURS: RED, BLUE, GREY AND BLACK. SIZES: 38 - 46. FIA APPROVED 8856/2018.

*The weight refers to a single boot, size 42, with a ± 1% tolerance.





CORSA R

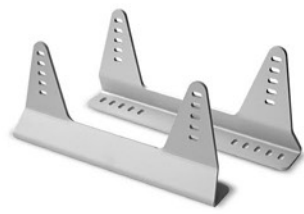
ONE-PIECE PALM CONSTRUCTION, OUTSIDE STITCHING, FIA 8856/2000 APPROVED. COLOURS: BLACK, RED, BLUE OR WHITE. SIZES: 8 - 13.



BALACLAVA COMFORT TECH
FIREPROOF OPEN BALACLAVA, AVAILABLE IN WHITE OR BLACK, FIA APPROVED, ONE SIZE.



HIGH COLLAR SHIRT COMFORT TECH
FIREPROOF LONG SLEEVED HIGH COLLAR TOP, AVAILABLE IN WHITE OR BLACK, FIA APPROVED, SIZES: S - XXL.



ALUMINUM SEAT BASE

DESIGNED TO ACCOMMODATE ALL MOMO RACE SEATS, THE TILT ANGLE AND SEAT HEIGHT CAN BE CUSTOMIZED THANKS THE 6 FIXING HOLE DESIGN. THE BASE FEATURES 10 HOLES TO EASE LONGITUDINAL POSITION OF THE SEAT IN THE CAR. THICKNESS 5 mm, WEIGHT 1,5 Kg, ANODIZED ALUMINIUM COLOR.



STEEL SEAT BASE

DESIGNED TO ACCOMMODATE ALL MOMO RACE SEATS, THE TILT ANGLE AND SEAT HEIGHT CAN BE CUSTOMIZED THANKS THE 6 FIXING HOLE DESIGN. THE BASE FEATURES 10 HOLES TO EASE LONGITUDINAL POSITION OF THE SEAT IN THE CAR. THICKNESS 3 mm, WEIGHT 2,5 Kg, BLACK POWDER COATED FINISH, PUNCHED MOMO LOGO.



LONG JOHNS COMFORT TECH
FIREPROOF LONG JOHNS, AVAILABLE IN WHITE OR BLACK, FIA APPROVED, SIZES: S - XXL.



LONG SOCKS COMFORT TECH
FIREPROOF LONG SOCKS, AVAILABLE IN WHITE OR BLACK, FIA APPROVED, SIZES: S - XL.

RACING SEATS



Weight* (Kg)
STD: 10,3
XL: 10,5
XXL: 12,0



Weight* (Kg)
STD: 9,5
XL: 10,0
XXL: 12,0



Weight* (Kg)
STD: 9,4
XL: 10,0
XXL: 11,5



Weight* (Kg)
STD: 8,9
XL: 10,2



Weight* (Kg)
STD: 8,1



LESMO ONE
- TOP-OF-THE-LINE COMPOSITE ERGONOMIC SEAT.
- COMPATIBLE WITH HANS® DEVICES.
- UPHOLSTERED IN BREATHABLE FIRE-RETARDANT BLACK FABRIC.
- SIDE HEAD BOLSTERS.
- EXCLUSIVE AIRNET® TECHNICAL MATERIAL COVERING THE BACK CUSHIONS.
- KINDER POINT ON THE SEATING AREA.
- REMOVABLE DOUBLE LEG CUSHIONS.
- EXTERNAL WIDTH FOR SIDE MOUNTS: 390 mm (STANDARD VERSION).
- 5 ANTI-SUB SEAT BELT OPENINGS.
- FIA APPROVED 8855-1999

DAYTONA EVO
- COMPOSITE ERGONOMIC SEAT.
- COMPATIBLE WITH HANS® DEVICES.
- UPHOLSTERED IN BREATHABLE FIRE-RETARDANT BLACK FABRIC.
- SIDE HEAD BOLSTERS.
- EXCLUSIVE AIRNET® TECHNICAL MATERIAL COVERING THE BACK CUSHIONS.
- KINDER POINT ON THE SEATING AREA.
- REMOVABLE DOUBLE LEG CUSHIONS.
- EXTERNAL WIDTH FOR SIDE MOUNTS: 390 mm (STANDARD VERSION).
- 5 ANTI-SUB SEAT BELT OPENINGS.
- FIA APPROVED 8855-1999.

DAYTONA
- COMPOSITE ERGONOMIC SEAT.
- COMPATIBLE WITH HANS® DEVICES.
- UPHOLSTERED IN BREATHABLE FIRE-RETARDANT BLACK FABRIC.
- SIDE HEAD BOLSTERS.
- EXCLUSIVE AIRNET® TECHNICAL MATERIAL COVERING THE BACK CUSHIONS.
- KINDER POINT ON THE SEATING AREA.
- REMOVABLE DOUBLE LEG CUSHIONS.
- EXTERNAL WIDTH FOR SIDE MOUNTS: 390 mm (STANDARD VERSION).
- 5 ANTI-SUB SEAT BELT OPENINGS.
- FIA APPROVED 8855-1999.

SUPER CUP
- COMPOSITE ERGONOMIC SEAT.
- COMPATIBLE WITH HANS® DEVICES.
- UPHOLSTERED IN BREATHABLE FIRE-RETARDANT BLACK FABRIC.
- EXCLUSIVE AIRNET® TECHNICAL MATERIAL COVERING THE BACK CUSHIONS.
- KINDER POINT ON THE SEATING AREA.
- REMOVABLE DOUBLE LEG CUSHIONS.
- SIDE MOUNT.
- 5 ANTI-SUB SEAT BELT OPENINGS.
- FIA APPROVED 8855-1999.

START
- COMPOSITE ERGONOMIC SEAT.
- COMPATIBLE WITH HANS® DEVICES.
- SIDE MOUNT.
- 5 ANTI-SUB SEAT BELT OPENINGS.
- FIA APPROVED 8855-1999.



* The weight refers to the complete seat (tolerance of 10%)



HERITAGE LINE

100% HAND MADE IN ITALY

WHERE MOMO'S PAST MEETS THE PRESENT
WITH OVER 50 YEARS OF EXPERIENCE PRODUCING PERFORMANCE ACCESSORIES, MOMO GOES BACK TO THEIR ROOTS WITH THE HERITAGE LINE. WITH RETRO-INSPIRED DESIGNS AND EXCEPTIONAL QUALITY, THE HERITAGE LINE CONNECTS MOMO'S PAST WITH TODAY'S INNOVATIONS TO PRODUCE A STATE-OF-THE-ART PRODUCT FOR YOUR CLASSIC SPORTS CAR.



GRAND PRIX
MAHOGANY WOOD WALNUT MATT FINISHING, BACK FINGER GROOVES, SILVER SPOKE - Ø 350 mm



SUPER GRAND PRIX
MAHOGANY WOOD WALNUT MATT FINISHING, BACK FINGER GROOVES, CHROME FINISH SPOKE - Ø 350 mm



PROTOTIPO HERITAGE
DISTRESSED BLACK LEATHER, WHITE STITCHES, BLACK SPOKE - Ø 350 mm



PROTOTIPO HERITAGE
DISTRESSED BLACK LEATHER, WHITE STITCHES, SILVER SPOKE - Ø 350 mm



INDY HERITAGE
MAHOGANY WOOD ZEBRANO GLOSSY FINISHING, BACK FINGER GROOVES, SILVER SPOKE - Ø 350 mm



CALIFORNIA WOOD
MAHOGANY WOOD ZEBRANO GLOSSY FINISHING, BACK FINGER GROOVES, CHROME FINISH SPOKE - Ø 360 mm



CALIFORNIA
BLACK LEATHER WITH PARALLEL WHITE STITCHES, BACK FINGER GROOVES, CHROME FINISH SPOKE - Ø 360 mm



TROFEO



TARGA

MAHOGANY AND BEECHWOOD WOOD, EMBOSSED VINTAGE CIGAR LEATHER TOP, TWO DIFFERENT SHIFT KNOBS SHAPES TO MEET EVERY DRIVERS' NEED.

DISCOVER THE ALL MOMO HERITAGE LINE AT:

momo.com

Bespoke Program

THE MOMO STEERING WHEEL OF YOUR DREAMS COMES TRUE!
You'll find the custom configurator under the "custom steering wheels" on momo.com.



Custom spoke laser engraving!



MAKE IT UNIQUE
#MyMOMO

MOMO SRL
Via Winkelmann 2,
20146 Milano - Italia
Tel: +39 02 424112
Mail: info@momo.it

