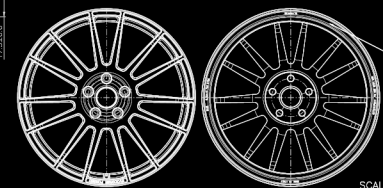


2024/25

Wheels



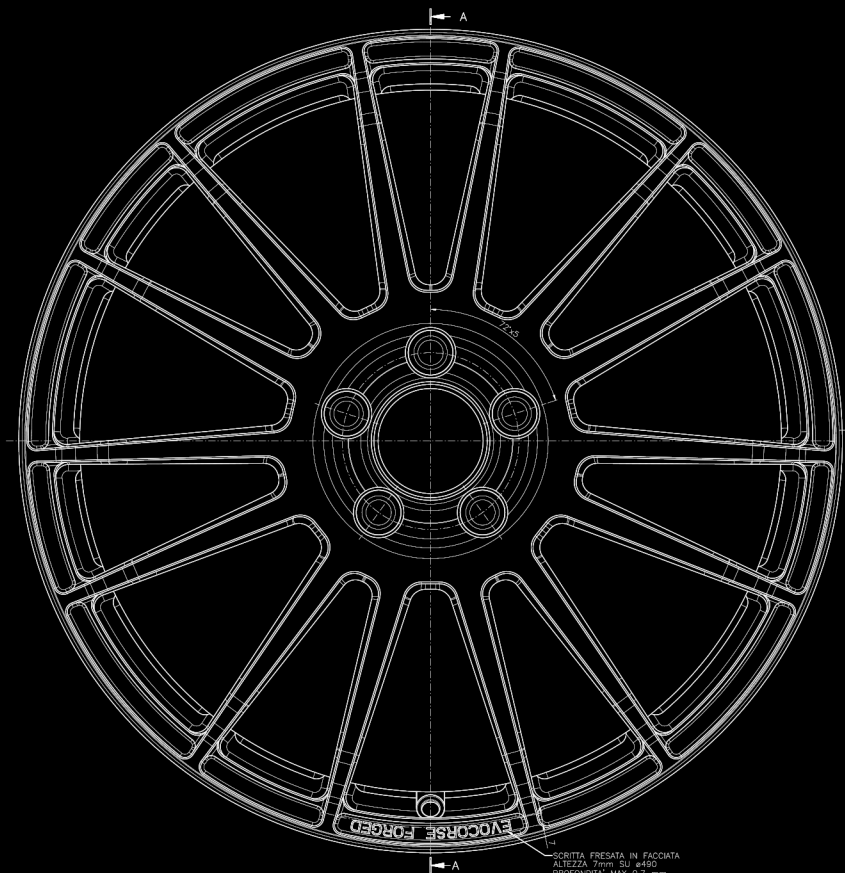
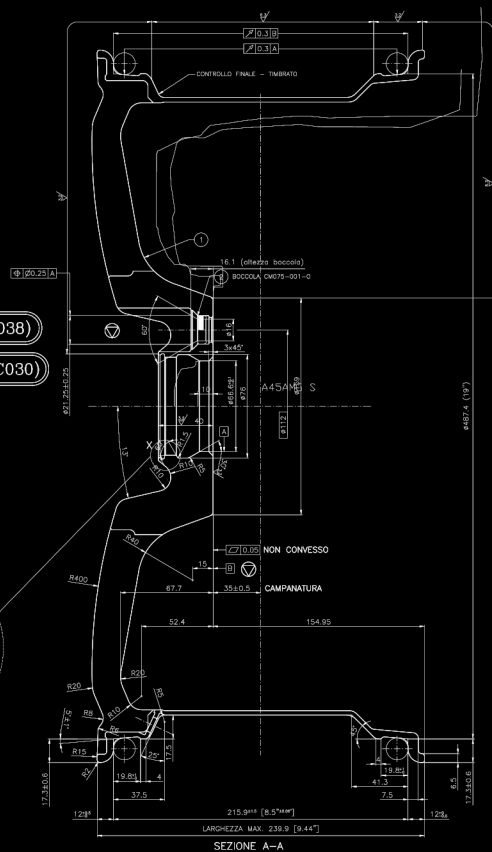
SCRITTE FRESATE SU BORDO ESTERNO
(altezza 4 mm su diametro $\varnothing 490$
profondità max 0.5mm)

MADE IN ITALY
WIKY (distributore)
ALMA (ISCUTE)
S.S. S.p.A. (SING. E335)
SERIES-017-0
MAX LOAD: 580 Kg

SCALA 1:4

PUNTA: CM0760040 (AR038)

PUNTA: CM0760250 (EVC030)



SCRITTA FRESATA IN FACCIATA
ALTEZZA 7mm SU $\varnothing 490$
PROFONDITA' MAX 0.7 mm

RAVASICORSE

INDEX

DLW	2
EtaBeta	10
GMP	24
ADM	52
AAA Wheels	56
EVOCorse	78
OZ	104
Sparco	112
AVERSUS	114
Japan Racing	118
Concaver	124
Advan Racing	129
ACE	132
AC	134
WedsSport	137
Schmidt	140
Rotiform	142
Off Road wheels	143

Informations

Options*:

Opzione senza sconto. Colori opzionali disponibili in stock o su ordine a dipendenza della dimensione ordinata.

Option ohne Rabatt. Optionale Farben ab Lager verfügbar oder auf Bestellung, abhängig von der bestellten Grösse.

Options sans remise. Couleurs optionnelles disponibles en stock ou sur commande en fonction de la taille commandée.

C: Concave design

DC: Deep concave design

EC: Extreme concave design

Tutti i prezzi sono esposti inclusa IVA 8.1%
Alle Preise sind inklusive 8.1% MwSt. angegeben
Tous les prix sont indiqués TVA 8.1% incluse





DLW[®]

D E L U X E W H E E L S

RAVASICORSE
PROFESSIONAL RACING & TUNING EQUIPMENT 

Matt Anthracite
face polished
(MA-FP)



MANaY

Silver (S), Gold (G), Matt Black (MB), Shiny Black (SB),
Matt Anthracite (MA), Shiny Anthracite (SA), White (W)

19"
20"



Size		PCD	S - G - MB - SB - MA - SA
8.5x19		5x105/108/112/114.3/115/120/130	545.-
8.5x19	DC	5x105/108/112/114.3/120	545.-
9.5x19	DC	5x112/114.3/120/130	565.-
11.0x19	DC	5x112/130	595.-
9.0x20		5x108/112/114.3/115/120/130	610.-
9.0x20	DC	5x108/112/120	610.-
10.5x20	DC	5x112/120/130	660.-

Options*:

Face polished (...FP) +30.-



Matt Black (MB)



Silver (S)



Matt Black
face polished (MB-FP)



Gold
face polished (G-FP)

DLW[®] COMBAT



NEW DIMENSIONS

CoMBAT

Silver (S), Gold (G), Matt Black (MB), Shiny Black (SB),
Matt Anthracite (MA), Shiny Anthracite (SA), White (W)

Matt Black
multipart optics,
full rim polished
(MB-MPFL)



17"
18"
20"
22"



Size	PCD	S - G - MB SB - MA - SA
7.0x17	5x108/120/130/160, 6x114.3/130	430.-
8.0x17	5x112/120/127/139.7, 6x114.3/135/139.7	440.-
8.0x18	5x110/120/127/130/139.7, 6x114.3/135/139.7	480.-
8.5x18	5x120/127, 6x139.7	540.-
9.0x20	5x120/127/130/139.7, 6x114.3/135/139.7	630.-
10.0x22 new	5x112/120/127/130/139.7, 6x139.7	820.-

Options*:

Rim polished (..PL)	+30.-
Full rim polished (..PFL)	+45.-
Multipart optics (...M)	+60.-
Multipart optics, full rim polished (...MPFL)	+90.-



Matt Black (MB)



Matt Black
multipart optics (MB-M)



Matt Black
rim polished (MB-PL)



Matt Black
full rim polished (MB-PFL)

UNIT

Silver (S), Gold (G), Matt Black (MB), Shiny Black (SB),
Matt Anthracite (MA), Shiny Anthracite (SA), White (W)



19"
21"



Shiny Black
full face polished
(SB-FFP)



Silver (S)

Shiny Black
rim polished (SB-PL)

Shiny Black
face & rim polished
(SB-FPL)

Gold (G)

Size	PCD	S - G - MB - SB - MA - SA
8.5x19	5x100-120	595.-
9.0x21	5x112/114.3/115/120/130	890.-
9.5x21	5x112/114.3/120	910.-
11.0x21	5x112/114.3/120/130	930.-

Options*:

Rim polished (..PL)	+45.-
Face and rim polished (..-FPL)	+45.-
Full face polished (..-FFP)	+45.-

URoS

Silver (S), Gold (G), Matt Black (MB), Shiny Black (SB),
Matt Anthracite (MA), Shiny Anthracite (SA), White (W)

Shiny Black
full face polished
(SB-FFP)



18"
19"
20"



Size	PCD	S - G - MB - SB - MA - SA
8.0x18	5x100-120	480.-
8.5x18	5x108-120	480.-
8.5x19	5x105/108/112/114.3/115/120/130	545.-
8.5x19	DC 5x108/108/112/114.3/120	545.-
9.5x19	DC 5x112/114.3/120/130	565.-
11.0x19	DC 5x112/130	595.-
9.0x20	5x108/112/114.3/115/120/130	610.-
9.0x20	DC 5x108/112/120	610.-
10.5x20	DC 5x112/120/130	660.-

Options*:

Face polished (...-FP) +45.-
Full face polished (...-FFP) +70.-



Silver (S)



Matt Black (MB)



Matt Anthracite
face polished (MA-FP)



Matt Black
face polished (MB-FP)

ELeNA

Shiny Black (SB), Matt Black (MB)



19"



Matt Black (MB)

Size	PCD	MB - SB
8.0x19	5x108/112/114.3	350,-



Matt Black (MB)



Shiny Black (SB)

ELITE

Silver (S), Gold (G), Matt Black (MB), Shiny Black (SB),
Matt Anthracite (MA), Shiny Anthracite (SA), White (W)

Matt Anthracite
face polished
(MA-FP)



19"
20"



Size		PCD	S - G - MB SB - MA - SA
8.5x19		5x105-120	595.-
8.5x19	DC	5x105-120	595.-
9.5x19		5x105-120	620.-
8.5x20		5x105-120	660.-
9.0x20	DC	5x105-120	670.-
10.5x20	DC	5x112/120/130	710.-

Options*:

Rim polished (...-PL)	+45.-
Face polished (...-FP)	+45.-



Silver (S)



Matt Black (MB)



Gold (G)



Matt Black
face polished (MB-FP)



RAVASICORSE
PROFESSIONAL RACING & TUNING EQUIPMENT 

NEW DIMENSIONS

PiUMA/C

 Silver (S), Matt Black (MB), Shiny Black (SB), Matt Anthracite (MA),
 Shiny Anthracite (SA), Gold (G), White (W)

Shiny Black (SB)


 18"
 19"
 20"
 22"


Size	PCD	S - MB - SB - MA SA - G - W
8.0x18	5x98-130	465.-
8.5x18	5x108-130	475.-
7.5x19	5x98-130	550.-
8.5x19	4x100, 5x98-130, 6x115	550.-
9.5x19	5x108-130	570.-
11.0x19	DC 5x108/112/114.3/120/130	600.-
9.0x20	5x108-130	620.-
10.5x20	DC 5x108-130	660.-
9.5x22	5x108-130	980.-
10.5x22	DC 5x108-130	995.-
11.5x22	DC 5x108-130	995.-

Options*:

Full rim polished (...-FPL)	+45.-
Full face polished (...-FFP)	+45.-



Silver (S)



Shiny Anthracite (SA)


 Shiny Black
 full rim polished (SB-FPL)

 Shiny Black
 face polished (SB-FP)



MeDUSA



Shiny Black
face polished
(SB-FP)



MeDUSA

Silver (S), Matt Black (MB), Shiny Black (SB), Matt Anthracite (MA),
Shiny Anthracite (SA), Gold (G), White (W)

20"
21"
23"



Deep Concave

Size	PCD	S - MB - SB - MA SA - G - W
9.0x20	5x108-130	760.-
10.0x20	DC 5x108-130	790.-
10.5x20	DC 5x108-130	810.-
9.0x21	5x108-130	960.-
9.5x21	5x108-130	970.-
9.5x21	DC 5x108-130	970.-
11.0x21	5x108-130	980.-
11.0x23	5x108-130	1150.-

Options*:

Face polished (...FP) +50.-



Matt Black (MB)



Silver (S)



Matt Anthracite (MA)



Gold
face polished (G-FP)

HERON

Silver (S), Matt Black (MB), Shiny Black (SB), Matt Anthracite (MA), Shiny Anthracite (SA), Gold (G), White (W)



19"
20"



Silver (S)



Matt Anthracite (MA)

Matt Black (MB)

Matt Black
face polished (MB-FP)

Gold
face polished (G-FP)

Size		PCD	S - MB - SB - MA SA - G - W
8.5x19		5x98-130	595.-
9.5x19	DC	5x100-130	620.-
11.0x19	DC	5x112-130	640.-
8.5x20		5x98-130	660.-
9.0x20		5x98-130	670.-
9.0x20	DC	5x98-130	670.-
10.0x20	DC	5x112/120/130	710.-
11.0x20	DC	5x112/120/130	740.-

Options*:

Face polished (...FP) +45.-

Shiny Black (SB)



VENTI-R

Silver (S), Matt Black (MB), Shiny Black (SB), Matt Anthracite (MA),
Shiny Anthracite (SA), Gold (G), White (W)

18"
19"
20"
21"



Size	PCD	S - MB - SB - MA SA - G - W
7.5x18	5x108/112/114.3/120	465.-
8.0x18	5x108/112/114.3/120	470.-
8.5x19	5x108/112/114.3/115/120/130	550.-
9.0x19	DC 5x105/108/112/114.3/120	575.-
8.5x20	5x108/112/114.3/115/120/130	610.-
9.0x20	DC 5x108/112/120	620.-
10.5x20	DC 5x112/120/130	660.-
9.0x21	5x108-130	950.-
9.5x21	DC 5x112/114.3/120	960.-
11.0x21	DC 5x108/112/114.3/120/130	980.-

Options*:

Rim polished - special edition (...-PL) +45.-
Face polished (...-FP) +60.-



Silver (S)



Matt Anthracite (MA)



Shiny Black
face polished (SB-FP)



Matt Black
special edition (MB-PL)

EB40

Silver (S), Matt Black (MB), Shiny Black (SB), Matt Anthracite (MA),
Shiny Anthracite (SA), Gold (G), White (W)



19"



Silver face
& rim polished
(S-FUP)

Size	PCD	S - MB - SB - MA SA - G - W
8.5x19	5x100-120	560.-

Options*:

Rim polished (...-PL)	+45.-
Full polished (...-FUP)	+45.-
Special edition, polished (...-SE)	+70.-



Shiny Black (SB)



Shiny Black
Special Edition (SE)



Matt Black
full polished (MB-FUP)



Matt Black
rim polished (MB-PL)

NEW DIMENSIONS

ERoS

 Silver (S), Matt Black (MB), Shiny Black (SB), Matt Anthracite (MA),
 Shiny Anthracite (SA), Gold (G), White (W)

Shiny Black (SB)


 15"
 16"
 17"
 18"


Size	PCD	S - MB - SB - MA SA - G - W
5.0x15	5x100	180.-
5.5x15	4x98-108 - 5x98-114.3	185.-
6.0x15	4x98-108 - 5x98-114.3	190.-
6.0x16	4x98-114.3 - 5x98-120	205.-
6.5x16	4x98-114.3 - 5x98-120	205.-
7.0x16	5x98-120	205.-
6.5x17	5x98-127	225.-
7.0x17	5x98-127	230.-
7.5x17	5x98-127	240.-
8.0x17	5x98-127	250.-
7.0x18	5x98-127	265.-
7.5x18	5x98-127	265.-
8.0x18	5x98-130	275.-
9.0x18	5x112	350.-

Options*:

Face polished (...FP)

+30.-



Silver (S)



Matt Black (MB)



Shiny Black (SB)


 Matt Black
 face polished (MB-FP)

AMoS

Silver (S), Matt Black (MB), Shiny Black (SB), Matt Anthracite (MA),
Shiny Anthracite (SA), Gold (G), White (W)



18"
19"
20"



Shiny Black
face polished
(SB-FP)



Silver (S)

Matt Anthracite (MA)

Shiny Black (SB)

Shiny Black
face polished
(SB-FP)

Size	PCD	S - MB - SB - MA SA - G - W
8.0x18	5x108/112/114.3	360.-
8.0x19	5x108/112/114.3	380.-
8.5x20	5x108/112/114.3	480.-

Options*:

Face polished (..-FP) +45.-

MAGiC

Silver (S), Matt Black (MB), Shiny Black (SB), Matt Anthracite (MA), Shiny Anthracite (SA), Gold (G), White (W)

Shiny Black
rim polished
(SB-PL)



18"
19"
20"



Size	PCD	S - MB - SB - MA SA - G - W
8.0x18	5x100/108/110/112/114.3	340.-
8.5x19	5x100/108/110/112/114.3	360.-
8.5x20	5x108/110/112/114.3	440.-
9.0x20	5x112	480.-

Options*:

Rim polished (...-PL) +30.-
Face & rim polished (...-FPL) +45.-



Shiny Black
rim polished (SB-PL)



Matt Anthracite
face & rim polished
(MA-FPL)



Shiny Black
face & rim polished
(SB-FPL)



Gold rim polished
(G-PL)

TETTSUT

Silver (S), Matt Black (MB), Shiny Black (SB), Matt Anthracite (MA),
Shiny Anthracite (SA), Gold (G), White (W)



17"
18"
19"
20"
22"



Shiny Black
face polished
(SB-FP)



Silver (S)

Matt Anthracite (MA)

Matt Black (MB)

Shiny Black
rim polished (SB-PL)

Size	PCD	S - MB - SB - MA SA - G - W
7.0x17	4x98-114.3 - 5x98-120	280.-
8.0x17	5x98-130	290.-
8.0x18	4x98/108 - 5x98-130	310.-
8.5x18	5x100/110/112/114.3/115/120/130	330.-
8.0x19	5x98-130	390.-
9.0x19	5x98-130	410.-
8.0x20	5x98-130	450.-
9.0x20	5x108-139.7 - 6x114/130/135	475.-
10.0x20	5x108-130	490.-
10.0x22	5x108-139.7 - 6x114/139.7	720.-

Options*:

Rim polished (...-PL)	+45.-
Face polished (...-FP)	+45.-

CUSTOMISE YOUR WHEELS!

REFLEX COLORS from 95.- chf/pc:
Blue, Bronze, Green, Orange, Red & Yellow



LASER WRITING from 50.- chf/pc:
Laser engraving of words or logos



DAKaR

Silver (S), Matt Black (MB), Shiny Black (SB), Matt Anthracite (MA), Shiny Anthracite (SA), Gold (G), White (W)



16"
17"

DAKaR-R

Silver (S), Matt Black (MB), Shiny Black (SB), Matt Anthracite (MA), Shiny Anthracite (SA), Gold (G), White (W)



Size	PCD	S - MB - SB - MA SA - G - W
7.0x16	5x108/114.3/120/127/130/139.7 6x114.3/139.7	315.-
8.0x17	5x112/114.3/120/127/130/139.7 6x114.3/115/127/139.7	340.-

Size	PCD	S - MB - SB - MA SA - G - W
7.0x16	5x139.7/160/165.1 6x139.7	340.-
8.0x17	5x139.7/160/165.1 6x139.7	380.-

ROBUS

Silver (S), Matt Black (MB), Shiny Black (SB), Matt Anthracite (MA), Shiny Anthracite (SA), Gold (G), White (W)



16"
18"

Size	PCD	S - MB - SB - MA SA - G - W
7.0x16	6x114.3/130/139.7	310.-
8.0x18	6x114.3/130/139.7	350.-

Options*:

Face polished (...-FP) +40.-

ATRIA

Silver (S), Matt Black (MB), Shiny Black (SB), Matt Anthracite (MA), Shiny Anthracite (SA), Gold (G), White (W)



15"
16"

Size	PCD	S - MB - SB - MA SA - G - W
6.5x15	5x112/114.3/118/120/130/160	290.-
6.5x16	5x112/114.3/118/120/130/160/170 6x130	310.-

Options*:

Face polished (...-FP) +40.-

IGMF[®]
ITALIA
PROFESSIONAL ALLOY WHEELS 



RAVASICORSE
PROFESSIONAL RACING & TUNING EQUIPMENT 

Shiny Black (SB)



TOTALE

Shiny Black, Shiny Black & Matt Anthracite face polished,
Luci di Portofino

19"
20"
21"
22"
23"



Size	PCD	SB	SBP - MAP	LDP
8.0x19	5x108/110/112/114.3	288.-	326.-	348.-
9.0x19	5x110/112/114.3	294.-	332.-	354.-
8.5x20	5x108/110/112/114.3	431.-	460.-	491.-
9.5x20	5x112/114.3	431.-	460.-	491.-
8.5x21	5x108/110/112/114.3	529.-	557.-	586.-
9.5x21	5x108/112/114.3	529.-	557.-	586.-
10.5x21	5x112/114.3	529.-	557.-	595.-
9.5x22	5x108/110/112/114.3	642.-	670.-	705.-
10.0x22	5x112/130	657.-	685.-	720.-
10.5x22	5x110/112/114.3	657.-	685.-	720.-
11.5x22	5x112/130	670.-	700.-	735.-
10.0x23	5x112/130	777.-	807.-	848.-
11.5x23	5x112/130	800.-	831.-	873.-



Shiny Black (SB)



Matt Anthracite
face polished (MAP)



Shiny Black
face polished (SBP)



Luci di Portofino (LDP)

NEW 2024

EVENTO

Shiny Black,
Shiny Black & Matt Anthracite face polished



18"
19"
20"
21"
22"



Shiny Black
face polished
(SBP)



Shiny Black (SB)

Matt Anthracite
face polished (MAP)

Shiny Black
face polished (SBP)

Size	PCD	SB	SBP - MAP
7.5x18	5x100/112	243.-	262.-
8.0x18	5x112	243.-	262.-
8.0x19	5x112	261.-	295.-
8.0x20	5x112	351.-	372.-
9.0x20	5x112	351.-	372.-
8.5x21	5x112	503.-	532.-
9.0x21	5x112	503.-	532.-
10.0x21	5x112	512.-	539.-
9.0x22	5x112	550.-	598.-
10.0x22	5x112	553.-	601.-

Shiny Black
face polished
(SBP)



REBEL

Shiny Black, Shiny Black & Matt Anthracite face polished,
Luci di Portofino

19"
20"
21"
22"
23"



Size	PCD	SB	SBP - MAP	LDP
8.5x19	5x112	267.-	302.-	323.-
8.5x20	5x112	338.-	363.-	389.-
9.0x20	5x112/120	338.-	363.-	389.-
8.5x21	5x112	503.-	532.-	557.-
9.0x21	5x112	503.-	532.-	557.-
9.5x21	5x112/130	503.-	532.-	557.-
10.0x21	5x112	512.-	539.-	566.-
11.5x21	5x130	523.-	550.-	577.-
9.0x22	5x112	592.-	645.-	678.-
9.5x22	5x112/130	592.-	645.-	678.-
10.0x22	5x112	592.-	645.-	678.-
11.5x22	5x130	604.-	658.-	690.-
10.0x23	5x112	777.-	807.-	848.-



Shiny Black (SB)



Matt Anthracite
face polished (MAP)



Shiny Black
face polished (SBP)



Luci di Portofino (LDP)

GUNNER

Silver, Shiny Black,
Shiny Black & Matt Anthracite face polished



Shiny Black
face polished
(SBP)

18"
19"
20"
21"
22"



Silver (S)

Shiny Black (SB)

Matt Anthracite
face polished (MAP)

Shiny Black
face polished (SBP)

Size	PCD	S - SB	SBP - MAP
7.5x18	5x100	243.-	262.-
8.0x18	5x112	243.-	262.-
8.5x19	5x112	261.-	295.-
8.5x20	5x112	351.-	372.-
9.0x20	5x108/112/120	351.-	372.-
8.5x21	5x112	503.-	532.-
9.0x21	5x108/112	503.-	532.-
9.5x21	5x112	503.-	532.-
10.0x21	5x112/130	512.-	539.-
10.5x21	5x112	512.-	539.-
9.0x22	5x108/112	550.-	598.-
9.5x22	5x112	550.-	598.-
10.0x22	5x112/130	553.-	601.-
10.5x22	5x112	553.-	601.-

Shiny Black
face polished
(SBP)



ATOM

Silver, Shiny Black,
Shiny Black & Anthracite face polished

17"
18"
19"
20"
21"



Size	PCD	S - SB	SBP - SAP
7.5x17	5x112	213.-	232.-
8.0x18	5x112	243.-	262.-
8.5x19	5x112	261.-	295.-
9.0x20	5x112	345.-	366.-
9.0x21	5x112	503.-	532.-
10.0x21	5x112	512.-	539.-



Silver (S)



Shiny Black (SB)



Shiny Anthracite
face polished (SAP)



Shiny Black
face polished (SBP)

NEW 2024

FENDER

Shiny Black,
Shiny Black & Matt Anthracite face polished



19"
20"
21"
22"



Shiny Black
face polished
(SBP)



Shiny Black (SB)

Matt Anthracite
face polished (MAP)

Shiny Black
face polished (SBP)

Size	PCD	SB	SBP - MAP
8.0x19	5x112	270.-	305.-
9.0x19	5x112	274.-	311.-
8.5x20	5x112	347.-	374.-
9.5x20	5x112	356.-	378.-
8.5x21	5x112	542.-	572.-
9.5x21	5x112	542.-	572.-
10.5x21	5x112	553.-	581.-
9.0x22	5x112	592.-	645.-
10.0x22	5x112	592.-	645.-
11.0x22	5x112	604.-	658.-

Shiny Black (SB)



SWAN

Silver, Shiny Black, Shiny Anthracite,
Shiny Black face polished

17"
18"
19"
20"



Size	PCD	S - SB - SA	SBP
7.5x17	5x108/112	213.-	232.-
8.0x18	5x108/112/114.3	243.-	262.-
8.0x19	5x108/112/114.3/120	261.-	295.-
9.0x19	5x112/120	267.-	302.-
8.5x20	5x108/112/114.3/120	338.-	363.-
9.5x20	5x112/114.3/120	345.-	366.-



Silver (S)



Shiny Anthracite (SA)



Shiny Black (SB)



Shiny Black
face polished (SBP)

SPECTER

Shiny Black,
Shiny Black & Matt Anthracite face polished



18"
19"
20"



Shiny Black
face polished
(SBP)



Shiny Black (SB)

Matt Anthracite
face polished (MAP)

Shiny Black
face polished (SBP)

Size	PCD	SB	SBP - MAP
8.0x18	5x112/120	243.-	262.-
8.0x19	5x112/120	261.-	295.-
9.0x19	5x112/120	267.-	302.-
8.5x20	5x112	338.-	363.-
9.5x20	5x112	345.-	366.-

Shiny Black
face polished
(SBP)



SPARTA

Shiny Black,
Shiny Black & Matt Anthracite face polished

20"
21"
22"



Size	PCD	SB	SBP - MAP
9.0x20	5x112/114.3/120	378.-	401.-
10.5x20	5x112/114.3	392.-	416.-
9.0x21	5x112/114.3	542.-	572.-
9.5x21	5x112	542.-	572.-
10.5x21	5x112/114.3	553.-	581.-
9.5x22	5x112/114.3	592.-	645.-
10.5x22	5x112/114.3	592.-	645.-



Shiny Black (SB)

Matt Anthracite
face polished (MAP)

Shiny Black
face polished (SBP)

COVENTRY

Shiny Black,
Shiny Black & Matt Anthracite face polished



21''
22''



Shiny Black
face polished
(SBP)



Shiny Black (SB)

Matt Anthracite
face polished (MAP)

Shiny Black
face polished (SBP)

Size	PCD	SB	SBP - MAP
9.0x21	5x108	503.-	532.-
9.5x21	5x108/120	503.-	532.-
9.5x22	5x108/120	548.-	598.-

EXPERIENCE

Shiny Black,
Shiny Black & Shiny Anthracite face polished

Shiny Black
face polished
(SBP)



22"
23"



Size	PCD	SB	SBP - SAP
9.0x22	5x108	592.-	645.-
9.5x22	5x120	592.-	645.-
9.5x23	5x120	777.-	807.-



Shiny Black (SB)

Shiny Anthracite
face polished (SAP)

Shiny Black
face polished (SBP)

BERGHEM

Shiny Black, Matt Anthracite,
Shiny Black rim polished



18"
19"
20"
21"
22"
23"



Shiny Black
rim polished
(SBPL)



Shiny Black (SB)

Matt Anthracite (MA)

Shiny Black
rim polished (SBPL)

Size	PCD	SB - MA	SBPL
8.0x18	5x112	243.-	262.-
8.0x19	5x112	273.-	295.-
9.0x19	5x112	283.-	308.-
8.5x20	5x112	395.-	419.-
9.5x20	5x112/130	407.-	429.-
8.5x21	5x112	542.-	572.-
9.5x21	5x112	542.-	572.-
10.0x21	5x112/130	553.-	581.-
11.5x21	5x112	566.-	595.-
10.0x22	5x112	598.-	645.-
11.5x22	5x112/130	628.-	676.-
10.0x23	5x112/130	777.-	807.-
11.5x23	5x112/130	800.-	831.-

NEW 2024

ENERGIA

Shiny Black,
Shiny Black face polished

Shiny Black (SB)



19"
20"
21"
22"



Size	PCD	SB	SBP
8.5x19	5x108/112/114.3	270.-	305.-
9.5x19	5x108/114.3	274.-	311.-
8.5x20	5x108/112/114.3	347.-	374.-
9.5x20	5x114.3	356.-	378.-
8.5x21	5x112	503.-	532.-
9.5x21	5x112/114.3/120	503.-	532.-
10.5x21	5x112/114.3/120	512.-	539.-
9.0x22	5x112/120	550.-	598.-
10.0x22	5x112/114.3/120	550.-	598.-
11.0x22	5x112/114.3	563.-	612.-



Shiny Black (SB)



Shiny Black
face polished (SBP)

FASTEN

Silver, Shiny Black, Matt Anthracite,
Shiny Black face polished



17"
18"
19"
20"



Shiny Black
face polished
(SBP)



Silver (S)



Matt Anthracite (MA)



Shiny Black (SB)



Shiny Black
face polished (SBP)

Size	PCD	S - SB - MA	SBP
7.5x17	5x112	213.-	232.-
7.5x18	5x112	243.-	262.-
8.0x18	5x112	243.-	262.-
8.0x19	5x112	261.-	295.-
9.0x19	5x112	267.-	302.-
8.5x20	5x112	336.-	362.-
9.5x20	5x112	344.-	365.-

Shiny Black
face polished
(SBP)



QSTAR

Shiny Black,
Shiny Black & Anthracite face polished

18"
19"
20"
21"



Size	PCD	SB	SBP - SAP
7.5x18	5x112	243.-	262.-
8.0x18	5x112	243.-	262.-
8.0x19	5x112	261.-	295.-
9.0x19	5x112	267.-	302.-
8.0x20	5x112	338.-	363.-
9.0x20	5x112	345.-	366.-
10.0x20	5x112	353.-	374.-
8.0x21	5x112	503.-	532.-
9.0x21	5x112	503.-	532.-
10.0x21	5x112	512.-	539.-



Shiny Black (SB)

Shiny Anthracite
face polished (SAP)

Shiny Black
face polished (SBP)

LUNICA

Shiny Black, Shiny Black & Matt Anthracite face polished,
Luci di Portofino



18"
19"
20"



Shiny Black
face polished
(SBP)



Shiny Black (SB)



Matt Anthracite
face polished (MAP)



Shiny Black
face polished (SBP)



Luci di Portofino (LDP)

Size	PCD	SB	SBP - MAP	LDP
7.5x18	5x100-114.3	243.-	262.-	280.-
8.0x18	5x110/112	243.-	262.-	280.-
7.5x19	5x100/108/112/114.3	261.-	295.-	317.-
8.0x19	5x108/110/112/120	261.-	295.-	317.-
9.0x19	5x110/112/114.3	267.-	302.-	323.-
8.5x20	5x108-120	338.-	363.-	389.-
9.5x20	5x112/114.3	345.-	366.-	392.-

Shiny Black
face polished
(SBP)



STELLAR

Silver, Shiny Black, Shiny Black rim polished,
Shiny Black & Matt Anthracite face polished

17"
18"
19"
20"
21"
22"



Size	PCD	S - SB	SBP - MAP - SBPL
7.5x17	5x110/112	213.-	232.-
7.5x18	5x112	243.-	262.-
8.0x18	5x110/112	243.-	262.-
9.0x18	5x112	247.-	267.-
8.0x19	5x112/114.3	261.-	295.-
8.5x19	5x112	261.-	295.-
9.5x19	5x112	267.-	302.-
8.5x20	5x112	338.-	363.-
9.5x20	5x112	345.-	366.-
8.5x21	5x112	503.-	532.-
9.0x21	5x108/110/112/120	503.-	532.-
10.0x21	5x112/130	512.-	539.-
11.5x21	5x112	512.-	539.-
9.0x22	5x108/112/120/130	550.-	598.-
10.0x22	5x112/120/130	550.-	598.-
11.0x22	5x112/130	563.-	612.-



Silver (S)



Shiny Black (SB)



Shiny Black
rim polished (SBPL)



Matt Anthracite
face polished (MAP)

TITAN

Shiny Black,
Shiny Black & Matt Anthracite face polished



20"
21"
22"



Shiny Black
face polished
(SBP)



Shiny Black (SB)

Matt Anthracite
face polished (MAP)

Shiny Black
face polished (SBP)

Size	PCD	SB	SBP - MAP
8.5x20	5x130	454.-	484.-
9.5x20	5x112/130	454.-	484.-
10.5x20	5x112/130	469.-	499.-
11.0x20	5x130	469.-	499.-
9.5x21	5x112/130	556.-	587.-
10.5x21	5x112/130	556.-	587.-
11.5x21	5x130	634.-	666.-
9.5x22	5x112/130	676.-	706.-
10.0x22	5x130	691.-	721.-
10.5x22	5x112	691.-	721.-
11.5x22	5x130	706.-	736.-

NEW 2024

FURIOSA

Shiny Black, Matt Anthracite,
Shiny Black face polished

Shiny Black (SB)



20"
21"
22"



Size	PCD	SB - MA	SBP
9.5x20	5x112/130	447.-	478.-
10.5x20	5x112	447.-	478.-
11.0x20	5x130	447.-	478.-
9.5x21	5x112/130	535.-	566.-
10.5x21	5x112	640.-	663.-
11.5x21	5x130	640.-	663.-
9.0x22	5x112	676.-	700.-
10.0x22	5x112/130	691.-	721.-
11.5x22	5x130	691.-	721.-



Shiny Black (SB)

Matt Anthracite (MA)

Shiny Black
face polished (SBP)

DRAKE

Shiny Black, Shiny Dark Anthracite,
Shiny Black face polished



18"
19"
20"



Shiny Black
face polished
(SBP)



Shiny Black (SB)

Shiny Dark
Anthracite (SDA)

Shiny Black
face polished (SBP)

Size	PCD	SB - SDA	SBP
8.0x18	5x110	243.-	262.-
8.0x19	5x110	261.-	295.-
9.0x19	5x110	267.-	302.-
8.5x20	5x110	338.-	363.-

Shiny Black
face polished
(SBP)



TARGA

Shiny Black, Shiny Black face polished

21"
22"



Size	PCD	SB	SBP
9.0x21	5x112	524.-	556.-
10.0x21	5x112/130	524.-	556.-
11.5x21	5x130	628.-	649.-
9.0x22	5x112	660.-	684.-
10.0x22	5x112/130	676.-	700.-
11.5x22	5x130	691.-	721.-



Shiny Black (SB)



Shiny Black
face polished (SBP)

NEW 2024

CARTESIO

Shiny Black, Shiny Black face polished



18"
19"
20"



Shiny Black
face polished
(SBP)



Shiny Black (SB)



Shiny Black
face polished (SBP)

Size	PCD	SB	SBP
7.5x18	5x100-114.3	250.-	270.-
8.0x19	5x108-114.3	270.-	305.-
8.0x20	5x108-114.3	347.-	374.-
9.0x20	5x112/114.3	356.-	378.-

Shiny Black
face polished
(SBP)



MENTOR

Shiny Black,
Shiny Black & Matt Anthracite face polished

17"
18"
19"
20"



Size	PCD	SB	SBP - MAP
7.0x17	5x100/108/112/114.3	213.-	232.-
7.5x18	5x100/112/114.3	243.-	262.-
8.0x18	5x108/112	243.-	262.-
7.5x19	5x100/112	261.-	295.-
8.0x19	5x108/112/114.3	261.-	295.-
8.0x20	5x108/112/114.3	338.-	363.-
9.0x20	5x108/112	345.-	366.-
10.0x20	5x112	353.-	374.-



Shiny Black (SB)

Matt Anthracite
face polished (MAP)

Shiny Black
face polished (SBP)

MATISSE

Shiny Black,
Shiny Black & Matt Anthracite face polished



Shiny Black
face polished
(SBP)

15"
16"
17"
18"
19"
20"



Shiny Black (SB)

Matt Anthracite
face polished (MAP)

Shiny Black
face polished (SBP)

Size	PCD	SB	SBP - MAP
5.5x15	4x100	157.-	181.-
6.0x15	4x98-108	157.-	181.-
6.5x16	4x98-108, 5x98-115	172.-	196.-
7.0x17	4x100-108, 5x108-114.3	213.-	232.-
7.5x18	4x100-108, 5x108/112/114.3	243.-	262.-
7.5x19	5x108/110/112/114.3	261.-	295.-
7.5x20	5x112	338.-	363.-
8.0x20	5x108/112	338.-	363.-
8.5x20	5x108/112/114.3	338.-	363.-
9.0x20	5x112	345.-	366.-

HIGH LOAD CAPACITY

MATISSE-S

Shiny Black,
Shiny Black & Matt Anthracite face polished

Shiny Black
face polished
(SBP)



18"
19"
20"



Size	PCD	SB	SBP - MAP
7.5x18	5x108/114.3	253.-	274.-
8.0x18	5x112/120	253.-	274.-
8.5x18	5x112	253.-	274.-
8.5x19	5x120	274.-	311.-
9.0x20	5x120	362.-	384.-



Shiny Black (SB)

Matt Anthracite
face polished (MAP)

Shiny Black
face polished (SBP)

SJ15

Silver, Shiny Black,
Shiny Black face polished



15"



Shiny Black
face polished
(SBP)

Size	PCD	S - SB	SBP
5.5x15	5x139.7	169.-	196.-



Silver (S)

Shiny Black (SB)

Shiny Black
face polished (SBP)

Shiny Black
face polished
(SBP)



ASTRAL

Shiny Black,
Shiny Black face polished

16"
17"



Size	PCD	SB	SBP
6.5x16	4x98-108, 5x98-120	151.-	175.-
7.0x17	4x98-108, 5x98-120	175.-	199.-



Shiny Black (SB)



Shiny Black
face polished (SBP)

ADM
Authentic Design Machined



RAVASICORSE
PROFESSIONAL RACING & TUNING EQUIPMENT 



SQUID

Satin Black & Dark Grey polished lip

Satin Black polished lip (SBPL)



17"
18"
19"
20"
21"
22"



Size	PCD	DGGPL
7.5x17	4x100-108, 5x100/108/112/114.3/120	225.-
7.5x18	5x100/108/112/114.3/120	249.-
8.5x18	5x112/120	264.-
8.0x19	5x108/112/114.3/120	316.-
9.0x19	5x112/120	324.-

Size	PCD	SBPL
8.5x20	5x108/112/120/130	476.-
9.5x20	5x108/112/120/130	493.-
9.0x21	5x108/112/120/130	515.-
10.0x21	5x112/120/130	532.-
9.5x22	5x108/112/120/130	548.-
10.5x22	5x112/120/130	581.-



Satin Black polished lip (SBPL)



Dark Grey polished lip (DGGPL)



RX6 NEW DESIGN

Dark Anthracite Gloss



19"



Dark Anthracite
Gloss (DAG)

Size	PCD	DAG
8.0x19	5x112	283.-



Dark Anthracite Gloss (DAG)

NEW DIMENSIONS

OCTOPUS

Dark Anthracite Gloss

Dark Anthracite
Gloss (DAG)



15"
16"
17"
18"



Size	PCD	DAG
5.5x15	5x100	149.-
6.0x15	4x100-108, 5x100	149.-
6.0x16	5x100/112/114.3	158.-
6.5x16	4x100-108, 5x100/108/110/112/114.3	162.-
7.0x16	5x112	162.-
6.5x17	5x112/114.3	183.-
7.0x17	5x100/108/112/114.3	183.-
7.5x17	5x108/112/114.3/120	183.-
7.0x18	5x108/112/114.3	208.-
8.0x18	5x108/112/114.3/130	216.-



Dark Anthracite Gloss (DAG)



RAVASICORSE
PROFESSIONAL RACING & TUNING EQUIPMENT 

ABARTH

model 111

Matt Black, Anthracite, White



Matt Black (MB)



Anthracite (A)



White (W)

Size	PCD	MB - A - W
7.5x17	4x98	245.-

ALFA ROMEO

model 905

Shiny Anthracite, Shiny Black face polished



Shiny Black face polished (SBP)



Shiny Anthracite (SA)

Size	PCD	SA	SBP
8.0x18	5x110	243.-	262.-
8.0x19	5x110	261.-	295.-
9.0x19	5x110	267.-	302.-
8.5x20	5x110	338.-	363.-

AUDI



Shiny Black face polished (SBP)



Matt Anthracite face polished (MAP)



Shiny Black (SB)



model 425 NEW DESIGN

Shiny Black, Shiny Black & Matt Anthracite face polished

Size	PCD	SB	SBP- MAP
7.5x18	5x100/112	243.-	262.-
8.0x18	5x112	243.-	262.-
8.0x19	5x112	261.-	295.-
8.0x20	5x112	351.-	372.-
9.0x20	5x112	351.-	372.-
8.5x21	5x112	503.-	532.-
9.0x21	5x112	503.-	532.-
10.0x21	5x112	512.-	539.-
9.0x22	5x112	550.-	598.-
10.0x22	5x112	553.-	601.-

model 688

Shiny Black, Shiny Black face polished



Shiny Black face polished (SBP)



Shiny Black (SB)

Size	PCD	SB	SBP
8.0x18	5x112	216.-	241.-
8.5x19	5x112	274.-	299.-
9.0x20	5x112	407.-	432.-

AUDI

model 801

Shiny Black, Shiny Black & Matt Anthracite face polished



Shiny Black face polished (SBP)



Matt Anthracite face polished (MAP)



Shiny Black (SB)

Size	PCD	SB	SBP - MAP
7.5x17	5x112	213.-	232.-
8.0x18	5x112	243.-	262.-
8.5x19	5x112	261.-	295.-
9.0x20	5x112	345.-	366.-
9.0x21	5x112	503.-	532.-
10.0x21	5x112	512.-	539.-

model 902 NEW DESIGN

Silver, Shiny Black, Shiny Black & Matt Anthracite face polished



Shiny Black face polished (SBP)



Matt Anthracite face polished (MAP)



Shiny Black (SB)

Size	PCD	S - SB	SBP - MAP
7.5x18	5x100	243.-	262.-
8.0x18	5x112	243.-	262.-
8.5x19	5x112	261.-	295.-
8.5x20	5x112	351.-	372.-
9.0x20	5x112	351.-	372.-
8.5x21	5x112	503.-	532.-
9.0x21	5x112	503.-	532.-
9.5x21	5x112	503.-	532.-
10.0x21	5x112	512.-	539.-
10.5x21	5x112	512.-	539.-
9.0x22	5x112	550.-	598.-
9.5x22	5x112	550.-	598.-
10.0x22	5x112	553.-	601.-
10.5x22	5x112	553.-	601.-

AUDI



model 906

Matt Black



Matt Black (MB)

Size	PCD	MB
8.0x18	5x100/112	340.-
8.5x19	5x100/112	360.-
8.5x20	5x112	440.-
9.0x20	5x112	480.-



model 965

Shiny Black, Shiny Black & Matt Anthracite face polished



Shiny Black face polished (SBP)

Shiny Black (SB)

Matt Anthracite face polished (MAP)

Size	PCD	SB	SBP - MAP
8.5x19	5x112	267.-	302.-
8.5x20	5x112	338.-	363.-
9.0x20	5x112/120	338.-	363.-
8.5x21	5x112	503.-	532.-
9.0x21	5x112	503.-	532.-
9.5x21	5x112/130	503.-	532.-
10.0x21	5x112	512.-	539.-
11.5x21	5x130	523.-	550.-
9.0x22	5x112	592.-	645.-
9.5x22	5x112/130	592.-	645.-
10.0x22	5x112	592.-	645.-
11.5x22	5x130	604.-	658.-
10.0x23	5x112	777.-	807.-

BMW



Shiny Black (SB)

model 451 NEW DESIGN

Shiny Black

Size	PCD	SB
8.0x19	5x112/120	280.-
9.0x19	5x112/120	284.-
8.5x20	5x112/120	415.-
9.5x20	5x112/120	425.-



Made in Italy

model 479 NEW DESIGN

Shiny Black, Shiny Black & Matt Anthracite face polished



Shiny Black face polished (SBP)



Matt Anthracite face polished (MAP)



Shiny Black (SB)

Size	PCD	SB	SBP - MAP
8.0x19	5x112	270.-	305.-
9.0x19	5x112	274.-	311.-
8.5x20	5x112	347.-	374.-
9.5x20	5x112	356.-	378.-
8.5x21	5x112	542.-	572.-
9.5x21	5x112	542.-	572.-
10.5x21	5x112	553.-	581.-
9.0x22	5x112	592.-	645.-
10.0x22	5x112	592.-	645.-
11.0x22	5x112	604.-	658.-

BMW



Shiny Black face polished (SBP)

model 686

Shiny Black face polished

Size	PCD	SBP
8.0x18	5x112	233.-
9.0x18	5x112	241.-
8.0x19	5x112	283.-
9.0x19	5x112	299.-


Made in Italy

model 812

Shiny Black, Shiny Black & Matt Anthracite face polished



Shiny Black face polished (SBP)



Matt Anthracite face polished (MAP)



Shiny Black (SB)

Size	PCD	SB	SBP - MAP
8.0x18	5x112/120	243.-	262.-
8.0x19	5x112/120	261.-	295.-
9.0x19	5x112/120	267.-	302.-
8.5x20	5x112	338.-	363.-
9.5x20	5x112	345.-	366.-

BMW

model 951

Shiny Black, Shiny Anthracite, Shiny Black face polished



Shiny Black face polished (SBP)



Shiny Anthracite (SA)



Shiny Black (SB)

Size	PCD	SB - SA	SBP
7.5x17	5x112	213.-	232.-
8.0x18	5x112	243.-	262.-
8.0x19	5x112/120	261.-	295.-
9.0x19	5x112/120	267.-	302.-
8.5x20	5x112/120	338.-	363.-
9.5x20	5x112/120	345.-	366.-

model 956

Shiny Black, Shiny Black & Matt Anthracite face polished



Shiny Black face polished (SBP)



Matt Anthracite face polished (MAP)



Shiny Black (SB)

Size	PCD	SB	SBP - MAP
9.0x20	5x112	378.-	401.-
10.5x20	5x112	392.-	416.-
9.0x21	5x112	542.-	572.-
9.5x21	5x112	542.-	572.-
10.5x21	5x112	553.-	581.-
9.5x22	5x112	592.-	645.-
10.5x22	5x112	592.-	645.-

LAND ROVER

Made in Italy

model 917

Shiny Black & Matt Anthracite face polished



Shiny Black face polished (SBP)



Matt Anthracite face polished (MAP)

Size	PCD	SBP - MAP
9.0x21	5x108	532.-
9.5x21	5x108/120	532.-
9.5x22	5x108/120	598.-

Made in Italy

model 942

Shiny Black, Shiny Black & Shiny Anthracite face polished



Shiny Black face polished (SBP)



Shiny Anthracite face polished (SAP)



Shiny Black (SB)

Size	PCD	SB	SBP - SAP
9.0x22	5x108	592.-	645.-
9.5x22	5x120	592.-	645.-
9.5x23	5x120	777.-	807.-

MERCEDES

model 431 NEW DESIGN

Shiny Black, Shiny Black face polished



Shiny Black face polished (SBP)



Shiny Black (SB)

Size	PCD	SB	SBP
8.5x19	5x112	270.-	305.-
8.5x20	5x112	347.-	374.-
8.5x21	5x112	503.-	532.-
9.5x21	5x112	503.-	532.-
10.5x21	5x112	512.-	539.-
9.0x22	5x112	550.-	598.-
10.0x22	5x112	550.-	598.-
11.0x22	5x112	563.-	612.-

model 703

Dark Grey Gloss & Shiny Black rim polished



Shiny Black rim polished (SBPL)



Dark Grey Gloss rim polished (DGGPL)

Size	PCD	DGGPL	SBPL
7.5x17	5x112	225.-	-
7.5x18	5x112	250.-	-
8.5x18	5x112	258.-	-
8.0x19	5x112	316.-	-
9.0x19	5x112	324.-	-
8.5x20	5x112	-	465.-
9.5x20	5x112	-	482.-
9.0x21	5x112	-	515.-
10.0x21	5x112	-	532.-
9.5x22	5x112	-	548.-
10.5x22	5x112	-	582.-

model 778

Shiny Black & Matt Anthracite face polished, Shiny Black rim polished



Shiny Black face polished (SBP)



Shiny Black rim polished (SBPL)



Matt Anthracite face polished (MAP)

Size	PCD	SBPL - SBP - MAP
7.5x17	5x112	232.-
7.5x18	5x112	262.-
8.0x18	5x112	262.-
9.0x18	5x112	267.-
8.0x19	5x112	295.-
8.5x19	5x112	295.-
9.5x19	5x112	302.-
8.5x20	5x112	363.-
9.5x20	5x112	366.-
8.5x21	5x112	532.-
9.0x21	5x112	532.-
10.0x21	5x112	539.-
11.5x21	5x112	539.-
9.0x22	5x112	598.-
10.0x22	5x112	598.-
11.0x22	5x112	612.-

MERCEDES

model 903

Shiny Black face polished



Shiny Black face polished (SBP)



Size	PCD	SBP
8.5x19	5x112	283.-
9.5x19	5x112	299.-
8.5x20	5x112	415.-
9.5x20	5x112	432.-
10.0x21	5x112	449.-

MERCEDES

model 938

Shiny Black, Shiny Black & Shiny Anthracite face polished



Shiny Black face polished (SBP)



Shiny Black (SB)



Shiny Anthracite face polished (SAP)

Size	PCD	SB	SBP - SAP
7.5x18	5x112	243.-	262.-
8.0x18	5x112	243.-	262.-
8.0x19	5x112	261.-	295.-
9.0x19	5x112	267.-	302.-
8.0x20	5x112	338.-	363.-
9.0x20	5x112	345.-	366.-
10.0x20	5x112	353.-	374.-
8.0x21	5x112	503.-	532.-
9.0x21	5x112	503.-	532.-
10.0x21	5x112	512.-	539.-

model 950

Silver, Shiny Black, Matt Anthracite, Shiny Black face polished



Shiny Black face polished (SBP)



Shiny Black (SB)



Matt Anthracite (MA)

Size	PCD	S - SB - MA	SBP
7.5x17	5x112	213.-	232.-
7.5x18	5x112	243.-	262.-
8.0x18	5x112	243.-	262.-
8.0x19	5x112	261.-	295.-
9.0x19	5x112	267.-	302.-
8.5x20	5x112	336.-	362.-
9.5x20	5x112	344.-	365.-

model 971

Shiny Black, Matt Anthracite, Shiny Black rim polished



Shiny Black rim polished (SBPL)



Shiny Black (SB)



Matt Anthracite (MA)

Size	PCD	SB - MA	SBPL
8.0x18	5x112	243.-	262.-
8.0x19	5x112	273.-	295.-
9.0x19	5x112	283.-	308.-
8.5x20	5x112	395.-	419.-
9.5x20	5x112/130	407.-	429.-
8.5x21	5x112	542.-	572.-
9.5x21	5x112	542.-	572.-
10.0x21	5x112/130	553.-	581.-
11.5x21	5x112	566.-	595.-
10.0x22	5x112	598.-	645.-
11.5x22	5x112/130	628.-	676.-
10.0x23	5x112/130	777.-	807.-
11.5x23	5x112/130	800.-	831.-

MERCEDES

model 977

Shiny Black, Shiny Black & Matt Anthracite face polished



Shiny Black face polished (SBP)



Matt Anthracite face polished (MAP)



Shiny Black (SB)

Size	PCD	SB	SBP - MAP
7.5x18	5x112	243.-	262.-
8.0x18	5x112	243.-	262.-
7.5x19	5x112	261.-	295.-
8.0x19	5x112	261.-	295.-
9.0x19	5x112	267.-	302.-
8.5x20	5x112	338.-	363.-
9.5x20	5x112	345.-	366.-

PORSCHE



model 417 NEW DESIGN

Shiny Black, Matt Anthracite, Shiny Black face polished



Shiny Black face polished (SBP)



Shiny Black (SB)



Matt Anthracite (MA)

Size	PCD	SB - MA	SBP
9.5x20	5x112/130	447.-	478.-
10.5x20	5x112	447.-	478.-
11.0x20	5x130	447.-	478.-
9.5x21	5x112/130	535.-	566.-
10.5x21	5x112	640.-	663.-
11.5x21	5x130	640.-	663.-
9.0x22	5x112	676.-	700.-
10.0x22	5x112/130	691.-	721.-
11.5x22	5x130	691.-	721.-



model 666

Shiny Black, Shiny Black face polished



Shiny Black face polished (SBP)



Shiny Black (SB)

Size	PCD	SB	SBP
9.0x21	5x112	524.-	556.-
10.0x21	5x112/130	524.-	556.-
11.5x21	5x130	628.-	649.-
9.0x22	5x112	660.-	684.-
10.0x22	5x112/130	676.-	700.-
11.5x22	5x130	691.-	721.-

PORSCHE



Shiny Black rim polished (SBPL)

model 864

Shiny Black rim polished

Size	PCD	SBPL
8.0x18	5x112	241.-
9.0x18	5x112	266.-
9.0x20	5x112	432.-
10.0x20	5x112	465.-
9.0x21	5x112	482.-
10.0x21	5x112	498.-

model 878

Shiny Black, Shiny Black face polished



Shiny Black face polished (SBP)

Shiny Black (SB)

Size	PCD	SB	SBP
10.0x22	5x130	573.-	598.-
11.5x22	5x130	598.-	623.-

PORSCHE



Shiny Black face polished (SBP)



Matt Anthracite face polished (MAP)



Shiny Black (SB)

model 888

Shiny Black, Shiny Black & Matt Anthracite face polished

Size	PCD	SB	SBP - MAP
8.5x20	5x130	454.-	484.-
9.5x20	5x112/130	454.-	484.-
10.5x20	5x112/130	469.-	499.-
11.0x20	5x130	469.-	499.-
9.5x21	5x112/130	556.-	587.-
10.5x21	5x112/130	556.-	587.-
11.5x21	5x130	634.-	666.-
9.5x22	5x112/130	676.-	706.-
10.0x22	5x130	691.-	721.-
10.5x22	5x112	691.-	721.-
11.5x22	5x130	706.-	736.-

SKODA - SEAT



Shiny Black face polished (SBP)



Shiny Black (SB)

model 702

Shiny Black, Shiny Black face polished

Size	PCD	SB	SBP
7.5x17	5x112	200.-	225.-
8.0x18	5x112	208.-	233.-
8.5x19	5x112	266.-	291.-

model 965

Shiny Black, Shiny Black & Matt Anthracite face polished,
Satin Black face polished Copper touch



Shiny Black face polished (SBP)



Shiny Black (SB)



Satin Black face polished Copper touch (MBCT)

Size	PCD	SB	SBP - MAP	MBCT
8.5x19	5x112	267.-	302.-	323.-
8.5x20	5x112	338.-	363.-	389.-
9.0x20	5x112/120	338.-	363.-	389.-
8.5x21	5x112	503.-	532.-	557.-
9.0x21	5x112	503.-	532.-	557.-
9.5x21	5x112/130	503.-	532.-	557.-
10.0x21	5x112	512.-	539.-	566.-
11.5x21	5x130	523.-	550.-	577.-
9.0x22	5x112	592.-	645.-	678.-
9.5x22	5x112/130	592.-	645.-	678.-
10.0x22	5x112	592.-	645.-	678.-
11.5x22	5x130	604.-	658.-	690.-
10.0x23	5x112	777.-	807.-	848.-

CUPRA

model 977

Shiny Black, Shiny Black & Matt Anthracite face polished,
Satin Black face polished Copper touch



Matt Anthracite face polished (MAP)



Shiny Black (SB)



Satin Black face polished Copper touch (MBCT)

Size	PCD	SB	SBP - MAP	MBCT
7.5x18	5x112	243.-	262.-	280.-
8.0x18	5x112	243.-	262.-	280.-
7.5x19	5x112	261.-	295.-	317.-
8.0x19	5x112	261.-	295.-	317.-
9.0x19	5x112	267.-	302.-	323.-
8.5x20	5x112	338.-	363.-	389.-
9.5x20	5x112	345.-	366.-	392.-

TESLA

model 431 NEW DESIGN

Shiny Black, Shiny Black face polished



Shiny Black face polished (SBP)



Shiny Black (SB)

Size	PCD	SB	SBP
8.5x19	5x114.3	270.-	305.-
9.5x19	5x114.3	274.-	311.-
8.5x20	5x114.3	347.-	374.-
9.5x20	5x114.3	356.-	378.-
9.5x21	5x114.3	503.-	532.-
10.5x21	5x114.3	512.-	539.-
10.0x22	5x114.3	550.-	598.-
11.0x22	5x114.3	563.-	612.-

model 469

Shiny Black



Shiny Black (SB)



Size	PCD	SB
9.0x22	5x120	482.-
10.0x22	5x120	498.-

TESLA



Shiny Black face polished (SBP)



Matt Anthracite face polished (MAP)



Shiny Black (SB)



model 922

Shiny Black, Shiny Black & Matt Anthracite face polished

Size	PCD	SB	SBP - MAP
9.0x19	5x114.3	267.-	302.-
9.5x20	5x114.3	345.-	366.-



VOLKSWAGEN



Shiny Black face polished (SBP)



Matt Anthracite face polished (MAP)



Shiny Black (SB)

model 931 NEW DIMENSIONS

Shiny Black, Shiny Black & Matt Anthracite face polished

Size	PCD	SB	SBP - MAP
7.0x17	5x100/112	213.-	232.-
7.5x18	5x100/112	243.-	262.-
8.0x18	5x112	243.-	262.-
7.5x19	5x100/112	261.-	295.-
8.0x19	5x112	261.-	295.-
8.0x20	5x112	338.-	363.-
9.0x20	5x112	345.-	366.-
10.0x20	5x112	353.-	374.-

VOLKSWAGEN

model 923

Shiny Black, Shiny Black & Matt Anthracite face polished



Shiny Black face polished (SBP)



Matt Anthracite face polished (MAP)



Shiny Black (SB)

Size	PCD	SB	SBP - MAP
7.0x17	4x100, 5x112	213.-	232.-
7.5x18	4x100, 5x112	243.-	262.-
7.5x19	5x112	261.-	295.-
7.5x20	5x112	338.-	363.-
8.0x20	5x112	338.-	363.-
8.5x20	5x112	338.-	363.-
9.0x20	5x112	345.-	366.-

model 923XL

Shiny Black, Shiny Black & Matt Anthracite face polished

For high load capacity



Shiny Black face polished (SBP)



Matt Anthracite face polished (MAP)

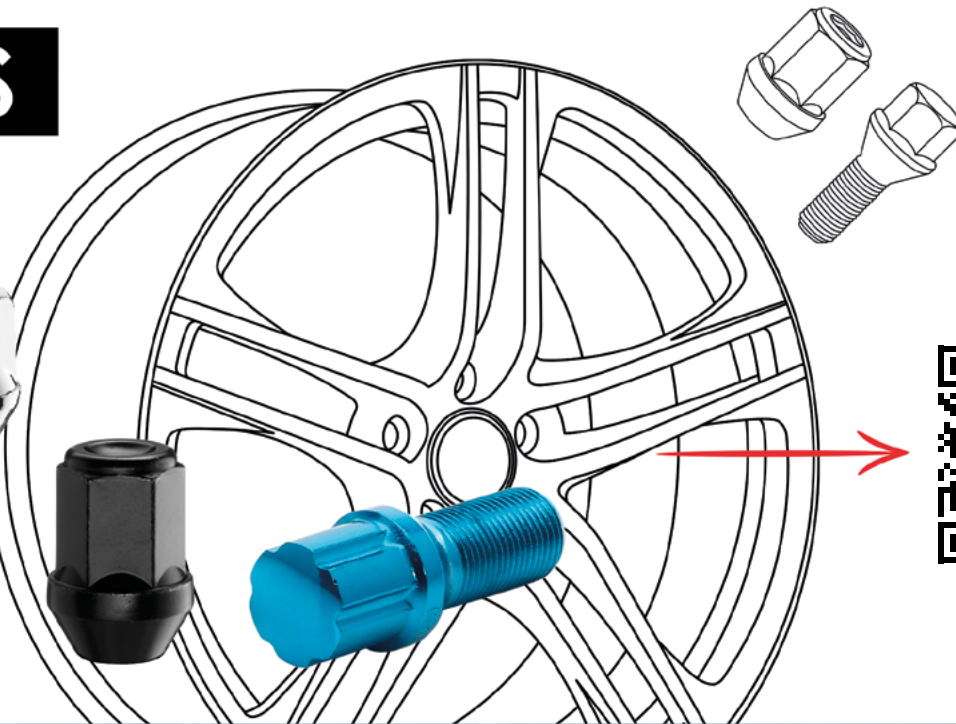
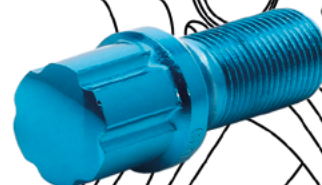


Shiny Black (SB)

Size	PCD	SB	SBP - MAP
8.0x18	5x120	253.-	274.-
8.5x19	5x120	274.-	311.-
9.0x20	5x120	362.-	384.-

FIXING MATERIALS

The first choice for your wheels



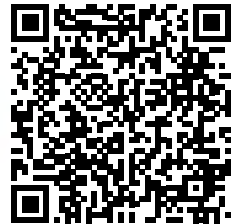
Scan me!



WHEEL SPACERS



Scan me!



EVO *Corse*



RAVASI CORSE
PROFESSIONAL RACING & TUNING EQUIPMENT 

LION V39

Gold (G)



White, Silver, Matt & Shiny Anthracite, Matt & Shiny Black, Matt & Shiny Bronze, Gold, Red, Orange, Yellow, Green, Blue, Pink

15"



Size	PCD	ET	Weight	W - MB
7.0x15	4x98 - 5x114.3	10 - 40	7.1 - 7.9 Kg	240.-

Options*:

- Anthracite, Bronze, Gold, Silver, Shiny Black +20.-
- NON-Standard: Red, Orange, Yellow, Blue, Green, Pink +60.-
- Hup cap +10.-



White (W)



Shiny Anthracite (SA)



Shiny Black (SB)



Gold (G)



**CHOOSE
YOUR 
COLOUR!**



Shiny Black (SB)



SANREMOcorse

White, Silver, Matt & Shiny Anthracite, Matt & Shiny Black, Matt & Shiny Bronze, Gold, Red, Orange, Yellow, Green, Blue, Pink

16"
17"
18"



Size	PCD	ET	Weight	W - MB
6.5x16	4x98 - 5x114.3	10 - 55	7.3 - 7.9 Kg	243.-
7.0x16	4x98 - 5x114.3	17 - 61	7.6 - 8.0 Kg	255.-
7.0x17	4x98 - 5x130	15 - 54	7.9 - 8.6 Kg	313.-
7.5x17	4x98 - 5x130	22 - 58	8.2 - 9.9 Kg	332.-
8.0x17	4x98 - 5x130	28 - 65	8.4 - 10.2 Kg	341.-
8.0x18	4x98 - 5x130	8 - 66	9.1 - 11.0 Kg	353.-
9.0x18	4x98 - 5x130	20 - 52	9.5 - 11.5 Kg	380.-

Options*:

Anthracite, Bronze, Gold, Silver, Shiny Black +20.-
 NON-Standard: Red, Orange, Yellow, Blue, Green, Pink +60.-
 Hup cap +10.-



White (W)



Shiny Anthracite (SA)



Matt Bronze (MTB)



Gold (G)

EVOcorse

SANREMO 17" GR. A

White, Silver, Matt & Shiny Anthracite, Matt & Shiny Black, Matt & Shiny Bronze, Gold, Red, Orange, Yellow, Green, Blue, Pink



17"



Shiny Anthracite (SA)



Size	PCD	ET	Weight	W - MB
7.0x17	4x98 - 5x130	27 - 58	8.2 - 8.8 Kg	316.-

Options*:

Anthracite, Bronze, Gold, Silver, Shiny Black	+20.-
NON-Standard: Red, Orange, Yellow, Blue, Green, Pink	+60.-
Hup cap	+10.-



White (W)



Shiny Anthracite (SA)



Matt Black (MB)



Gold (G)

SANREMOZERO

White, Silver, Matt & Shiny Anthracite, Matt & Shiny Black, Matt & Shiny Bronze, Gold, Red, Orange, Yellow, Green, Blue, Pink

Matt Bronze (MTB)



17"



Size	PCD	ET	Weight	W - MB
8.0x17	4x98 - 5x130	-6 - 33	8.6 - 9.2 Kg	340.-
8.5x17	4x98 - 5x130	0 - 39	8.8 - 9.4 Kg	349.-
9.0x17	4x98 - 5x130	6 - 45	9.0 - 9.6 Kg	371.-

Options*:

- Anthracite, Bronze, Gold, Silver, Shiny Black +20.-
- NON-Standard: Red, Orange, Yellow, Blue, Green, Pink +60.-
- Hup cap +10.-



Shiny Anthracite (SA)



Shiny Black (SB)



Matt Bronze (MTB)



Gold (G)

EVOcorse

SPORT 18"

White, Silver, Matt & Shiny Anthracite, Matt & Shiny Black, Matt & Shiny Bronze, Gold, Red, Orange, Yellow, Green, Blue, Pink



18"



Shiny Black (SB)



White (W)



Shiny Anthracite (SA)



Matt Black (MB)



Shiny Bronze (B)

Size	PCD	ET	Weight	W - MB
8.0x18	4x98 - 5x130	7 - 54	10.1 - 10.6 Kg	331.-
9.0x18	4x98 - 5x130	19 - 66	10.2 - 11.1 Kg	362.-
9.5x18	4x98 - 5x130	26 - 72	10.7 - 11.4 Kg	423.-
10.0x18	4x98 - 5x130	32 - 78	10.8 - 11.5 Kg	423.-

Options*:

Anthracite, Bronze, Gold, Silver, Shiny Black	+20.-
NON-Standard: Red, Orange, Yellow, Blue, Green, Pink	+60.-
Hup cap	+10.-

Z.A.R. 18"

White, Silver, Matt & Shiny Anthracite, Matt & Shiny Black, Matt & Shiny Bronze, Gold, Red, Orange, Yellow, Green, Blue, Pink

White (W)



18"



Size	PCD	ET	Weight	W - MB
8.0x18	4x98 - 5x114.3	6 - 58	9.7 - 10.5 Kg	321.-

Options*:

Anthracite, Bronze, Gold, Silver, Shiny Black	+20.-
NON-Standard Red, Orange, Yellow, Blue, Green, Pink	+60.-
Hup cap	+10.-



White (W)



Shiny Anthracite (SA)



Matt Black (MB)



Gold (G)

RALLYZERO

White, Silver, Matt & Shiny Anthracite, Matt & Shiny Black, Matt & Shiny Bronze, Gold, Red, Orange, Yellow, Green, Blue, Pink



17"
18"



White (W)

Shiny Anthracite (SA)

Gold (G)



Size	PCD	ET	Weight	Bore	W - MB
7.0x17	4x98	28/35	< 10.5 Kg	Ø58.1	329.-
7.0x17	4x100	30/35	< 10.5 Kg		329.-
7.0x17	4x108	35	< 10.5 Kg	Ø63.4	329.-
7.0x17	5x100	35	< 10.5 Kg		329.-
7.0x17	5x108	41	< 10.5 Kg	Ø60.1	329.-
7.0x17	5x112	35	< 10.5 Kg	Ø66.6	329.-
7.0x17	5x114.3	35	< 10.5 Kg		329.-
8.0x17	4x98	35	< 10.9 Kg	Ø58.1	341.-
8.0x17	4x108	26	< 10.9 Kg	Ø63.4	341.-
8.0x17	4x108	33	< 10.9 Kg	Ø63.4	341.-
8.0x17	5x98	25	< 10.9 Kg	Ø58.1	341.-
8.0x17	5x100	35	< 10.9 Kg	Ø54.1	341.-
8.0x17	5x100	40	< 10.9 Kg	Ø56.1	341.-
8.0x17	5x114.3	30/38	< 10.9 Kg	Ø67.1	341.-
8.0x17	5x120	15	< 10.9 Kg	Ø72.6	341.-
8.0x18	4x98	35	< 11.9 Kg	Ø58.1	365.-
8.0x18	4x100	35	< 11.9 Kg		365.-
8.0x18	4x108	26/33	< 11.9 Kg	Ø63.4	365.-
8.0x18	5x98	30	< 11.9 Kg	Ø58.1	365.-
8.0x18	5x100	35	< 11.9 Kg	Ø57.1	365.-
8.0x18	5x108	45/48	< 11.9 Kg		365.-
8.0x18	5x112	35/45	< 11.9 Kg		365.-
8.0x18	5x114.3	19/28/35/45	< 11.9 Kg		365.-

Options*:

Anthracite, Bronze, Gold, Silver, Shiny Black	+20.-
NON-Standard: Red, Orange, Yellow, Blue, Green, Pink	+60.-
Hup cap	+10.-

Matt Black (MB)



MONTECORSE 18"

White, Silver, Matt & Shiny Anthracite, Matt & Shiny Black, Matt & Shiny Bronze, Gold, Red, Orange, Yellow, Green, Blue, Pink

18"



Size	PCD	ET	Weight	Bore	W - MB
8.0x18	4x98	35	< 11.5 Kg	Ø58.1	365.-
8.0x18	4x100	35	< 11.5 Kg		365.-
8.0x18	4x108	26/33	< 11.5 Kg	Ø63.4	365.-
8.0x18	5x98	30	< 11.5 Kg	Ø58.1	365.-
8.0x18	5x100	35	< 11.5 Kg	Ø57.1	365.-
8.0x18	5x108	45/48	< 11.5 Kg		365.-
8.0x18	5x112	35/45	< 11.5 Kg		365.-
8.0x18	5x114.3	19/28/35/45	< 11.5 Kg		365.-

Options*:

- Anthracite, Bronze, Gold, Silver, Shiny Black +20.-
- NON-Standard: Red, Orange, Yellow, Blue, Green, Pink +60.-
- Hup cap +10.-



White (W)



Matt Anthracite (MA)



Shiny Bronze (B)



Gold (G)

MONTECARLO 17"

White, Silver, Matt & Shiny Anthracite, Matt & Shiny Black, Matt & Shiny Bronze, Gold, Red, Orange, Yellow, Green, Blue, Pink



17"



Shiny Black (SB)



White (W)

Silver (S)

Shiny Bronze (B)

Gold (G)

Size	PCD	ET	Weight	Bore	W - MB
7.0x17	4x98	28/35	< 11.5 Kg	Ø58.1	329.-
7.0x17	4x98 - 5x120	4 - 45	10.4 - 11.5 Kg		329.-
8.0x17	4x98	25/35/39.5	< 11.9 Kg	Ø58.1	341.-
8.0x17	4x100	35	< 11.9 Kg	Ø60.1	341.-
8.0x17	5x98	25/30/35	< 11.9 Kg	Ø58.1	341.-
8.0x17	4x98 - 5x120	17-58	11.4 - 11.9 Kg		341.-

Options*:

Anthracite, Bronze, Gold, Silver, Shiny Black +20.-
 NON-Standard: Red, Orange, Yellow, Blue, Green, Pink +60.-
 Hup cap +10.-

Shiny Anthracite (SA)
16"



MONTECARLO 15"/16"

White, Silver, Matt & Shiny Anthracite, Matt & Shiny Black, Matt & Shiny Bronze, Gold, Red, Orange, Yellow, Green, Blue, Pink

Size	PCD	ET	Bore	Weight	W - MB
6.5x16	4x98, 5x98	35		8.7 Kg	303.-
7.5x16	4x98, 5x98	37	Ø58.1	9.4 Kg	303.-

15"
16"



Silver (S) 15"



Size	PCD	ET	Bore	Weight	W - MB
7.0x15	4x98, 5x98	37	Ø58.1	9.1 Kg	288.-



White (W) 16"



Shiny Anthracite (SA) 16"



White (W) 15"



Silver (S) 15"

EVOcorse

OLYMPIAcorse

White, Silver, Matt & Shiny Anthracite, Matt & Shiny Black, Matt & Shiny Bronze, Gold, Red, Orange, Yellow, Green, Blue, Pink



15"
16"



Shiny Anthracite (SA)



Size	PCD	ET	Weight	W - MB
6.5x15	4x98 - 5x120	0 - 28	7.9 - 8.5 Kg	230.-
7.0x15	4x98 - 5x120	6 - 34	8.0 - 8.6 Kg	235.-
6.5x16	4x98 - 5x120	11 - 54	8.0 - 8.9 Kg	243.-

Options*:

Anthracite, Bronze, Gold, Silver, Shiny Black +20.-
 NON-Standard: Red, Orange, Yellow, Blue, Green, Pink +60.-
 Hup cap +10.-



White (W)



Silver (S)



Matt Black (MB)



Gold (G)

GTR 18"

Matt Black (MB)



White, Silver, Matt & Shiny Anthracite, Matt & Shiny Black, Matt & Shiny Bronze, Gold, Red, Orange, Yellow, Green, Blue, Pink

18"



Size	PCD	ET	Weight	W - MB
10.5x18	4x98 - 5x130	-6 - 52	11.5 - 11.9 Kg	487.-
11.0x18	4x98 - 5x130	0 - 58	11.7 - 12.1 Kg	487.-

Options*:

Anthracite, Bronze, Gold, Silver, Shiny Black +20.-
 NON-Standard: Red, Orange, Yellow, Blue, Green, Pink +60.-
 Hup cap +10.-



White (W)



Silver (S)



Shiny Anthracite (SA)



Matt Black (MB)

EVOcorse

DAKARcorse 16"

White, Silver, Matt & Shiny Anthracite, Matt & Shiny Black, Matt & Shiny Bronze, Gold, Red, Orange, Yellow, Green, Blue, Pink



16"



Shiny Anthracite (SA)



Size	PCD	ET	Weight	W - MB
7.0x16	4x98 - 6x165	25 - 48	11.0 - 13.5 Kg	352.-

Options*:

Anthracite, Bronze, Gold, Silver, Shiny Black	+20.-
NON-Standard: Red, Orange, Yellow, Blue, Green, Pink	+60.-
Hup cap (small)	+10.-
Hup cap (big)	+35.-



White (W)



Matt Anthracite (MA)



Matt Black (MB)



Shiny Black (SB)

Matt Black (MB)
16"



DAKARZERO 14-20"

White, Silver, Matt & Shiny Anthracite, Matt & Shiny Black, Matt & Shiny Bronze, Gold, Red, Orange, Yellow, Green, Blue, Pink

14"
15"
16"
17"
18"
20"



Size	PCD	ET	Weight	W - MB
6.5x14	4x98 - 4x165	-10 - 30	6.2 - 6.8 Kg	258.-
7.0x14	4x98 - 4x165	-10 - 30	6.4 - 7.0 Kg	258.-
7.0x15	4x98 - 6x139.7	-25 - 15	8.8 - 9.5 Kg	295.-
7.0x16	4x98 - 6x139.7	-10 - 26	11.0 - 13.5 Kg	352.-
8.0x16	4x98 - 6x165	-20 - 20	11.5 - 13.0 Kg	368.-
8.0x17	4x98 - 6x165	0 - 45	12.5 - 14.5 Kg	383.-
8.5x18	4x98 - 6x165	0 - 45	11.5 - 13.5 Kg	407.-
9.0x20	4x98 - 6x170	20 - 60	15.9 - 16.9 Kg	463.-

Options*:

- Anthracite, Bronze, Gold, Silver, Shiny Black +20.-
- NON-Standard: Red, Orange, Yellow, Blue, Green, Pink +60.-
- Hup cap (small) +10.-
- Hup cap (big) +35.-



Matt Black (MB) 14"



White (W) 15"



Shiny Bronze (B) 17"



Matt Anthracite (MA) 18"

EVOcorse

DAKAR SUPERZERO & FORGED

White, Silver, Matt & Shiny Anthracite, Matt & Shiny Black, Matt & Shiny Bronze, Gold, Red, Orange, Yellow, Green, Blue, Pink



Shiny Anthracite (SA)



17"



DAKAR SUPERZERO

Size	PCD	ET	Weight	W - MB
8.5x17	5x98 - 8x165	-15 - 35	14.5 - 15.5 Kg	392.-
9.0x17	5x98 - 8x165	-8 - 42	14.7 - 15.7 Kg	397.-

DAKAR FORGED

Size	PCD	ET	Weight	W - MB
8.5x17	5x98 - 8x165	-15 - 55	11.4 - 12.2 Kg	756.-

Options*:

Anthracite, Bronze, Gold, Silver, Shiny Black +20.-
 NON-Standard: Red, Orange, Yellow, Blue, Green, Pink +60.-
 Hup cap +35.-



White (W)



Shiny Anthracite (SA)



Matt Black (MB)



Matt Bronze (MTB)

Z.A.R. 15"

White (W)



White, Silver, Matt & Shiny Anthracite, Matt & Shiny Black, Matt & Shiny Bronze, Gold, Red, Orange, Yellow, Green, Blue, Pink

15"



Size	PCD	ET	Weight	W - MB
6.5x15	4x98 - 5x135	16 - 50	8.3 - 9.0 Kg	207.-
7.0x15	4x98 - 5x135	16 - 56	8.5 - 9.3 Kg	214.-

Options*:

Anthracite, Bronze, Gold, Silver, Shiny Black	+20.-
NON-Standard: Red, Orange, Yellow, Blue, Green, Pink	+60.-
Hup cap	+10.-



White (W)



Silver (S)



Shiny Anthracite (SA)



Matt Black (MB)

EVOCorse

X3MA 15"

White, Silver, Matt & Shiny Anthracite, Matt & Shiny Black, Matt & Shiny Bronze, Gold, Red, Orange, Yellow, Green, Blue, Pink



15"



White (W)



Size	PCD	ET	Weight	W - MB
6.5x15	4x98 - 5x114.3	9 - 40	6.3 - 7.5 Kg	230.-
7.0x15	4x98 - 5x114.3	16 - 47	6.5 - 7.7 Kg	235.-

Options*:

- Anthracite, Bronze, Gold, Silver, Shiny Black +20.-
- NON-Standard: Red, Orange, Yellow, Blue, Green, Pink +60.-
- Hup cap +10.-



White (W)



Shiny Anthracite (SA)



Matt Black (MB)



Gold (G)

Silver (S)



X3MAZERO 13"/15"

White, Silver, Matt & Shiny Anthracite, Matt & Shiny Black, Matt & Shiny Bronze, Gold, Red, Orange, Yellow, Green, Blue, Pink

13"
15"



Size	PCD	ET	Weight	W - MB
6.5x13	4x98 - 5x108, monolock	-31 - 25	4.4 - 4.6 Kg	243.-
7.0x13	4x98 - 5x108, monolock	-25 - 31	4.5 - 4.7 Kg	243.-
7.5x13	4x98 - 5x108, monolock	-18 - 38	4.6 - 4.8 Kg	258.-
8.0x13	4x98 - 5x108, monolock	-12 - 44	4.7 - 4.9 Kg	258.-
8.5x13	4x98 - 5x108, monolock	-20 - 20	4.8 - 5.3 Kg	304.-
9.0x13	4x98 - 5x108, monolock	-20 - 20	4.8 - 5.3 Kg	304.-
10.0x13	4x98 - 5x108, monolock	-10 - 40	5.5 - 5.9 Kg	334.-
10.5x13	4x98 - 5x108, monolock	-10 - 40	5.5 - 5.9 Kg	334.-
8.0x15	4x98 - 5x120	0 - 40	5.8 - 6.5 Kg	343.-

Options*:

Anthracite, Bronze, Gold, Silver, Shiny Black
NON-Standard: Red, Orange, Yellow, Blue, Green, Pink
Hup cap

+20.-
+60.-
+10.-



White (W)



Silver (S)



Shiny Anthracite (SA)



Gold (G)

EVOcorse

X3MA FORGED

White, Silver, Matt & Shiny Anthracite, Matt & Shiny Black, Matt & Shiny Bronze, Gold, Red, Orange, Yellow, Green, Blue, Pink



17"
18"
19"
20"



Shiny Anthracite (SA)



White (W)

Silver (S)

Shiny Anthracite (SA)

Shiny Black (SB)

Size	PCD	W - MB
8.0-9.0x17	4x98 - 5x150	From: 884.-
8.0-13.5x18	4x98 - 5x130	From: 1012.-
8.0-11.0x19	4x98 - 5x130	From: 1100.-
8.0-11.0x20	4x98 - 5x130	From: 1256.-

Options*:

Anthracite, Bronze, Gold, Silver, Shiny Black	+20.-
NON-Standard: Red, Orange, Yellow, Blue, Green, Pink	+60.-
Hup cap	+10.-

X3 FORGED 18"

White, Silver, Matt & Shiny Anthracite, Matt & Shiny Black, Matt & Shiny Bronze, Gold, Red, Orange, Yellow, Green, Blue, Pink

Matt Black (MB)



18"



Size	PCD	ET	Weight	W - MB
8.0x18	4x98 - 5x114.3	30 - 40	7.15 - 7.45 Kg	948.-
9.0x18	4x98 - 5x114.3	30 - 40	7.15 - 7.45 Kg	986.-

Options*:

- Anthracite, Bronze, Gold, Silver, Shiny Black +20.-
- NON-Standard: Red, Orange, Yellow, Blue, Green, Pink +60.-
- Hup cap +10.-

Specific applications for:

Alpine A110 / Toyota Yaris GR / Mitsubishi Lancer Evo 7-8-9

Weight:
from 7.15 to 7.45 Kg



Shiny Anthracite (SA)



Matt Black (MB)

SB9 RAGNO 17"

White, Silver, Matt & Shiny Anthracite, Matt & Shiny Black,
Matt & Shiny Bronze, Gold, Red, Orange, Yellow, Green, Blue, Pink



Size	PCD	ET	Bore	Weight	W - MB
7.0x17	4x100	43	Ø56.6	< 9.9 Kg	335.-
7.0x17	4x100	35	Ø60.1	9.5 Kg	335.-
7.0x17	4x108	40	Ø63.4	< 9.8 Kg	335.-
7.0x17	5x108	41/50	Ø60.1	9.8 - 10.5 Kg	335.-
7.0x17	5x114.3	40	Ø75	< 9.8 Kg	335.-

SANREMOcorse 15"

White, Silver, Matt & Shiny Anthracite, Matt & Shiny Black,
Matt & Shiny Bronze, Gold, Red, Orange, Yellow, Green, Blue, Pink



Size	PCD	ET	Weight	W - MB
6.0x15	4x98 - 5x135	17 - 50	6.9 - 8.5 Kg	223.-
6.5x15	4x98 - 5x135	23 - 56	7.2 - 8.9 Kg	230.-
7.0x15	4x98 - 5x135	30 - 63	7.8 - 9.3 Kg	235.-



SPORT 14"

White, Silver, Matt & Shiny Anthracite, Matt & Shiny Black, Matt & Shiny Bronze, Gold, Red, Orange, Yellow, Green, Blue, Pink



Size	PCD	ET	Weight	W - MB
5.5x14	4x98 - 5x114.3	10 - 42	6.3 - 7.7 Kg	217.-
6.0x14	4x98 - 5x114.3	16 - 48	6.5 - 7.8 Kg	217.-



FORMULAcorse 13"

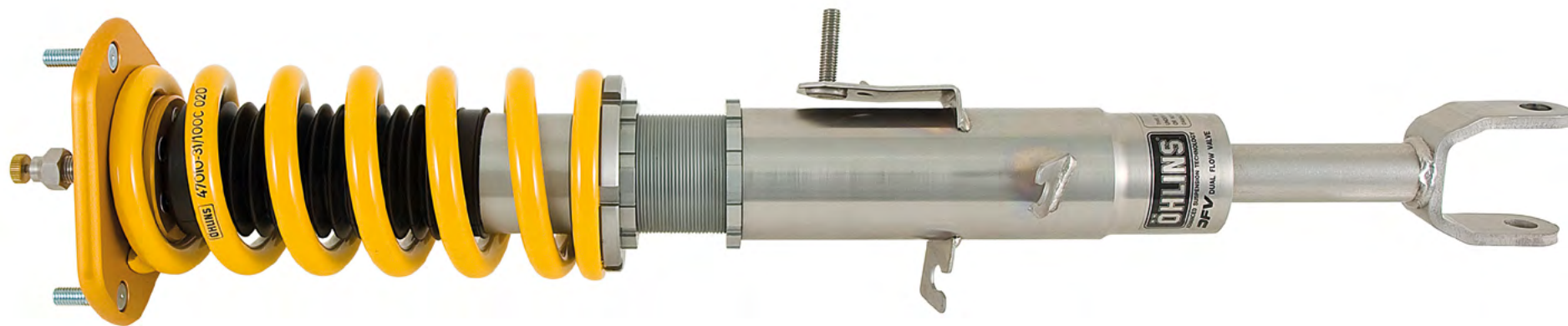
White, Silver, Matt & Shiny Anthracite, Matt & Shiny Black, Matt & Shiny Bronze, Gold, Red, Orange, Yellow, Green, Blue, Pink



Size	PCD	ET	Weight	W - MB
Front 8.0x13	monolock 80-100	-19 - 12	4.0 - 4.4 Kg	334.-
Front 8.5x13	monolock 80-100	-19 - 19	4.1 - 4.5 Kg	343.-
Front 9.0x13	monolock 80-100	-12 - 19	4.1 - 4.5 Kg	343.-
Rear 10.0x13	monolock 80-100	7 - 38	4.7 - 4.9 Kg	368.-
Rear 10.5x13	monolock 80-100	7 - 38	4.7 - 4.9 Kg	368.-



SUSPENSIONS



Suspensions



Springs



TAR•OX

brembo

EL
BRAKES

PAGID
RACING

FERODO

BRAKES



Brake Discs



Brake Pads



Brake Hose Kits




O.Z.[®]

Italian Company



RAVASICORSE

PROFESSIONAL RACING & TUNING EQUIPMENT 

ESTREMA GT HLT

Hyper Titanium, Satin Black,
Matt Bronze, Race Gold

Hyper Titanium (HT)



19"
20"
21"



Size	PCD	SB - HT - B - RG
8.0x19	5x112/114.3	637.-
8.5x19	5x108/112/114.3/120	639.-
9.0x19	5x112/120	648.-
9.5x19	5x112/120	660.-
10.0x19	5x112/120	666.-
9.5x20	5x112	757.-
10.0x20	5x112/120	773.-
10.5x20	5x112/114.3	784.-
10.0x21	5x112	893.-
10.5x21	5x112	904.-
11.0x21	5x112	916.-

Possible finishes:

Satin Black (SB), Hyper Titanium (HT), Matt Bronze (B), Race Gold (G)



Hyper Titanium (HT)



Satin Black (SB)



Race Gold (RG)



Matt Bronze (B)

O.Z[®]

LEGGERA HLT

Grigio Corsa Bright, Gloss Black,
Race Gold



17"
18"
19"
20"
21"



Gloss Black (GB)

Grigio Corsa Bright (GCB)

Race Gold (RG)

Size	PCD	GB - GCB - RG
7.5x17	5x100/112/114.3	380.-
8.0x17	5x112	384.-
8.0x18	5x100/108/112/114.3/120	459.-
8.0x19	5x100/108/110/112/114.3/120	625.-
8.5x19	5x108/112/114.3/120/130	627.-
9.0x19	5x110/112/114.3/120	634.-
9.5x19	5x112/120	648.-
10.0x19	5x120/130	655.-
11.0x19	5x130	683.-
12.0x19	5x130	700.-
8.0x20	5x112	707.-
8.5x20	5x108/112/114.3/120/130	723.-
9.0x20	5x110//112/120/130	732.-
10.0x20	5x112/120/130	757.-
11.0x20	5x130	782.-
12.0x20	5x130	809.-
8.5x21	5x108/112/120	830.-
9.0x21	5x112/120	842.-
9.5x21	5x112	857.-
11.0x21	5x130	875.-
11.5x21	5x130	887.-

Possible finishes:

Gloss Black (GB), Grigio Corsa Bright (GCB), Race Gold (RG)

RALLY RACING

White Red lettering, Dark Graphite Silver lettering,
Gloss Black silver lettering

White Red lettering
(WRL)



17"
18"
19"



Size	PCD	WRL - DGSL - GBSL
7.0x17	4x98/100/108, 5x100/108/110/112/114.3	323.-
8.0x17	4x100/108, 5x100/108/112/114.3/120	332.-
7.5x18	5x100/112/114.3	400.-
8.0x18	5x100/108/112/114.3/120	403.-
8.0x19	5x108/112/114.3/120	491.-
8.5x19	5x108/112/114.3	501.-

Possible finishes:

White Red lettering (WRL), Dark Graphite Silver lettering (DGSL),
Gloss Black silver lettering (GBSL)



Dark Graphite silver
lettering (DGSL)

Gloss Black silver
lettering (GBSL)



ULTIMATE AL FG

Race White, Grigio Corsa Bright, Star Graphite, Gloss Black, Matt Black, Matt Bronze, Race Gold, White Gold, Anodizzato Matt Blue Techno, Anodizzato Matt Red Techno



20"
21"



Matt Black (MB)



White (W)

White Gold (WG)

Anodizzato Matt
Blue Techno (AMBT)

Anodizzato Matt
Red Techno (AMRT)

Size	PCD	GB - MB - GCB - SG RW - RG - WG - B AMBT - AMRT
8.5x20	5x130	2022.-
9.0x20	5x130	2036.-
9.5x20	5x130	2047.-
10.0x20	5x130	2062.-
11.0x20	5x130	2071.-
11.5x21	5x130	2460.-
12.0x21	5x130	2480.-
12.5x21	5x130	2491.-
13.0x21	5x130	2513.-

Possible finishes:

Gloss Black (GB), Matt Black (MB), Grigio Corsa Bright (GCB), Star Graphite (SG), Race White (RW), Race Gold (RG), White Gold (WG), Matt Bronze (B), Anodizzato Matt Blue Techno (AMBT), Anodizzato Matt Red Techno (AMRT)

Race White
Red lettering
(RWRL)



SUPERTURISMO EVOLUZIONE

Race White Red lettering, Gloss Black Red lettering

18"



Size	PCD	RWRL - GBRL
8.0x18	5x112	469.-

Possible finishes:

Race White Red lettering (RWRL),
Gloss Black Red lettering (GBRL)



Race White
Red lettering (RWRL)

Gloss Black
Red lettering (GBRL)



ULTRALEGGERA HLT

White, Matt Black, Chrystal Titanium, Matt Bronze, Matt Graphite,
Matt Dark Graphite, Race Gold



15"
16"
17"
18"



Matt Bronze (B)



Matt Graphite (MG)

Matt Black (MB)

Race Gold (RG)

Size	PCD	MB - B - CT - MG MDG - W - RG
7.0x15	4x100/108	262.-
7.0x16	4x100/108, 5x112/114.3	303.-
7.0x17	4x98/100/108	364.-
7.5x17	5x100/108/112	368.-
8.0x17	5x100/108/112/114.3/120	368.-
7.0x18	4x100/108	436.-
7.5x18	5x112	436.-
8.0x18	5x98/100/108/110/112/114.3/120	442.-
9.0x18	5x114.3/120	446.-

Possible finishes:

Matt Black (MB), Matt Bronze (B), Chrystal Titanium (CT), Matt Graphite (MG),
Matt Dark Graphite (MDG), White (W), Race Gold (RG)

Gloss Black (GB)



ULTRALEGGERA HLT CL

White, Matt Graphite, Matt Black, Gloss Black, Matt Race Silver,
Matt Bronze, Race Gold, White Gold,
Red, Orange, Acid Green

19"
20"
21"



Size	PCD	MB	W - MG - MB - GB - MRS B - RG - WG - R - O - AG
8.5x19	5x130	854.-	945.-
11.0x19	5x130	920.-	1011.-
12.0x19	5x130	957.-	1048.-
8.5x20	5x130	955.-	1038.-
9.0x20	5x130	964.-	1052.-
9.5x20	5x130	997.-	1088.-
11.0x20	5x130	1025.-	1113.-
11.5x20	5x130	1040.-	1131.-
12.0x20	5x130	1048.-	1139.-
11.5x21	5x130	1243.-	1331.-
12.0x21	5x130	1257.-	1345.-
12.5x21	5x130	1267.-	1358.-

Possible finishes:

White (W), Matt Graphite (MG), Matt Black (MB),
Gloss Black (GB), Matt Race Silver (MRS), Matt Bronze (B), Race Gold (RG),
White Gold (WG), Red (R), Orange (O), Acid Green (AG)



White (W)



Matt Race Silver (MRS)



Matt Graphite (MG)



Matt Black (MB)

ASSETTO GARA

Matt Black, Matt Bronze



15"
16"
17"
18"
19"
20"



Matt Black (MB)



Matt Black (MB)

Matt Bronze (B)

Size	PCD	MB - B
6.5x15	4x100/108	206.-
7.0x16	4x100/108, 5x100/112/114.3	234.-
7.0x17	4x100/108, 5x100/112/114.3	262.-
7.5x17	5x100/108/110/112/114.3	269.-
7.5x18	4x100/108	322.-
8.0x18	5x100/108/110/112/114.3/120	324.-
8.0x19	5x108/112/114.3/120	378.-
8.5x19	5x108/112/114.3/120	382.-
8.5x20	5x108/112/114.3	449.-

Possible finishes:

Matt Black (MB), Matt Bronze (B)

GRAVEL

Matt Black, Matt Graphite, Rally Bronze

Matt Graphite (MG)



17"
18"



Size	PCD	MB - MG - RB
8.0x17	5x100/108/112/114.3/120	322.-
8.0x18	5x100/108/112/114.3/120	370.-

Possible finishes:

Matt Black (MB), Matt Graphite (MG), Rally Bronze (RB)



Matt Graphite (MG)

Matt Black (MB)

Rally Bronze (RB)

REBEL

Brushed Shiny Silver



19"
20"
21"
22"



Brushed Shiny
Silver (BS)

Size	PCD	BS
8.5x19	5x112/120	539.-
9.0x19	5x112/120	549.-
9.5x19	5x112/120	559.-
10.0x19	5x120	569.-
8.5x20	5x112	679.-
9.0x20	5x112/120	689.-
9.5x20	5x112/120	699.-
10.0x20	5x112	709.-
10.5x20	5x112/120	719.-
11.0x20	5x120	729.-
9.5x21	5x112	779.-
10.5x21	5x112	799.-
9.5x22	5x112/130	849.-
10.5x22	5x112/120/130	869.-
11.0x22	5x112	879.-
11.5x22	5x130	889.-
12.0x22	5x112/120	899.-

IKON

Shiny Black, Shiny Silver face polished

Shiny Black (SB)



19"
20"
21"
22"



Size	PCD	SSP - SB
8.5x19	5x108/112/114.3/120	489.-
9.5x19	5x112	509.-
8.5x20	5x112	599.-
9.0x20	5x108/112/114.3/120/127	609.-
10.0x20	5x112/120	629.-
9.5x21	5x112	659.-
10.5x21	5x112	679.-
9.5x22	5x112/130	759.-
10.5x22	5x112/120/127/130	779.-
11.5x22	5x112/120/130	799.-



Shiny Silver
face polished (SSP)



Shiny Black (SB)

BASTARD

Matt Silver, Shiny Black, Matt Bronze



20"
21"
22"



Shiny Black (SB)



Matt Silver (MS)

Shiny Black (SB)

Matt Bronze (MB)

Size	PCD	MS - SB - MB
9.0x20	5x108/112/114.3/120/127	549.-
10.0x20	5x112/114.3/120	569.-
9.0x21	5x112/114.3/120	609.-
10.5x21	5x112/114.3/120	629.-
9.5x22	5x108/110/112/130	679.-
10.5x22	5x112/120/127/130	699.-
11.5x22	5x110/112/120/130	709.-

A-FT 113

Shiny Black Sparkling

Shiny Black
Sparkling (SBS)



19"
20"
21"
22"



Size	PCD	SBS
8.5x19	5x112/114.3/120	539.-
9.5x19	5x112/120	559.-
8.5x20	5x112	639.-
9.0x20	5x112/114.3/120	649.-
9.5x20	5x114.3	659.-
10.0x20	5x112	669.-
10.5x20	5x112/114.3/120	679.-
9.0x21	5x112	729.-
9.5x21	5x112/114.3	739.-
10.0x21	5x112	749.-
10.5x21	5x112	759.-
11.0x21	5x112	769.-
10.0x22	5x112	809.-
10.5x22	5x112/120/130	819.-
11.0x22	5x112/130	829.-
12.0x22	5x112/120	849.-



JR3

White, Matt Black, Hyper Black, Gun Metal, Bronze, Dark Anodized Bronze, Gold, Silver Machined, Red



Matt Black

Gun Metal

Bronze

15"
16"
17"
18"
19"

Size	PCD / ET	All colors
7.0x15	4x100/108 +25 / 4x100/108 +40	246.-
7.0x15	4x100 +25/+40 / 4x108 +25 / 4x114.3 +40	246.-
7.0x15	3x112 / 4x100-114.3 / 5x100-114.3 +25 to +42	264.-
8.0x15	4x100/108 +25 / 4x100/114.3 +25	253.-
7.0x16	4x100 +25/+40 / 4x108 +25 / 4x114.3 +40 / 5x100 +40 / 5x114.3 +40	253.-
7.0x16	3x112 / 4x100-114.3 / 5x100-114.3 +25 to +40	293.-
8.0x16	4x100 +25	261.-
8.0x16	3x112 / 4x100-114.3 / 5x100-114.3 +25	278.-
7.0x17	4x100 +25+40 / 4x108 +25 / 4x114.3 +40 / 5x100 +40 / 5x114.3 +40	287.-
7.0x17	3x112 / 4x100-114.3 / 5x100-120 +20 to +42	295.-
8.0x17	4x100 +35 / 5x100 +35 / 5x114.3 +35 / 5x120 +35	302.-
8.0x17	3x112 / 4x100-114.3 / 5x100-120 +20 to +42	337.-
8.0x18	5x100 + 40 / 5x112 +40 / 5x114.3 +40/+45 / 5x120 +35	331.-
8.0x18	3x112 / 4x100-114.3 / 5x100-120 +20 to +45	367.-
8.5x18	3x112 / 4x100-114.3 / 5x100-120 +20 to +42	381.-
9.0x18	5x114.3 +35 / 5x120 +15/+35	339.-
9.0x18	3x112 / 4x100-114.3 / 5x100-120 +15 to +40	374.-
9.5x18	3x112 / 4x100-114.3 / 5x100-120 +22 to +38	389.-
10.5x18	3x112 / 4x100-114.3 / 5x100-120 +25 to +30	396.-
8.5x19	3x112 / 4x100-114.3 / 5x100-120 +20 to +42	401.-
9.5x19	3x112 / 4x100-114.3 / 5x100-120 +22 to +35	414.-

Chrome, Gloss Black Machined, Gold Machine,
Silver Machined, White Machined

Size	PCD / ET	All colors
7.0x15	4x100/108 +20	246.-
7.0x15	3x112 / 4x100-114.3 / 5x100-114.3 +20	264.-
8.0x15	4x100/108 +20 / 4x100/114.3 +15	253.-
8.0x15	3x112 / 4x100-114.3 / 5x100-120 +20	271.-
9.0x15	4x100/108 +10	261.-
9.0x15	3x112 / 4x100-114.3 / 5x100-114.3 +10	278.-
7.5x16	4x100/108 +25	275.-
7.5x16	3x112 / 4x100-114.3 / 5x100-114.3 +25	293.-
8.0x16	4x100/108 / 5x100/114.3 +25	275.-
8.0x16	3x112 / 4x100-114.3 / 5x100-20 +25	293.-
9.0x16	4x100/108 +20	283.-
9.0x16	3x112 / 4x100-114.3 / 5x100-120 +20	300.-
7.5x17	4x100/108 +20/+35 / 4x100/114.3 +35 / 5x100/114.3 +35/ 5x108/112 +35 / 5x114.3/120 +25	295.-
7.5x17	3x112 / 4x100-114.3 / 5x100-120 +20 to +35	330.-
8.5x17	4x100/108 +20 / 4x100/114.3 +20 / 5x100/114.3 +35 / 5x108/112 +35 / 5x112/120 +20/+35	295.-
8.5x17	3x112 / 4x100-114.3 / 5x100-120 +20 to +35	330.-
10.0x17	4x100/108 / 5x112/120 +20	302.-
10.0x17	3x112 / 4x100-114.3 / 5x100-114.3 +20	320.-
8.0x18	5x100/120 / 5x112/120 +35 / 5x112/114.3 / 5x112/120 +40	324.-
8.0x18	3x112 / 4x100-114.3 / 5x100-120 +35 to +40	359.-
9.0x18	5x100/120 +35 / 5x112/114.3 +40	331.-
9.0x18	3x112 / 4x100-114.3 / 5x100-120 +20 to +40	367.-
8.5x19	3x112 / 4x100-114.3 / 5x100-120 +35	411.-
9.5x19	3x112 / 4x100-114.3 / 5x100-120 +35	415.-

15"
16"
17"
18"
19"



Chrome

Gloss Black Machined

Gold Machined



JR37

Glossy Black, Hyper Black, Platinum Bronze, Silver Machined



Glossy Black

Hyper Black

Platinum Bronze

17"
18"
19"
20"
21"

Size	PCD / ET	All colors
8.0x17	4x100 +40 / 5x100 +35 / 5x112 + 40 / 5x114.3 +40	339.-
8.0x17	5x100-114.3 +20 to +40	359.-
8.0x18	5x100 + 35 / 5x108 +40 / 5x112 +35/+45 / 5x114.3 +45 / 5x120 +35	361.-
8.0x18	5x100-120 +20 to +45	381.-
8.5x19	5x112 +35/+45 / 5x114.3 +45 / 5x120 +35	415.-
8.5x19	5x100-120 +20 to +45	436.-
9.5x19	5x112 +45 / 5x120 +40	430.-
9.5x19	5x100-120 +20 to +45	450.-
8.5x20	5x108 +45 / 5x112 +35/45 / 5x120 +35	467.-
8.5x20	5x100-130 +20 to +45	480.-
9.0x20	5x112 +35/+45	474.-
9.0x20	5x100-130 +20 to +45	495.-
10.0x20	5x112 +25/+35 / 5x120 +45	481.-
10.0x20	5x100-130 +20 to +45	502.-
10.5x20	5x100-130 +20 to +40	517.-
9.0x21	5x108-130 +10 to +52	664.-
9.5x21	5x112 +35	650.-
9.5x21	5x108-130 +0 to +58	671.-
10.0x21	5x108-130 +10 to +64	678.-
10.5x21	5x108-130 +10 to +46	686.-
11.0x21	5x108-130 +11 to +55	693.-
11.5x21	5x108-130 +17 to +60	700.-



JR42

Glossy Black, Matt Gun Metal, Silver Machined

Size	PCD / ET	All colors
8.5x19	5x112 +45 / 5x114.3 +45 / 5x120 +35	445.-
8.5x19	5x108-120 +25 to +45	465.-
9.5x19	5x112 +42 / 5x120 +40	452.-
9.5x19	5x108-120 +20 to +42	473.-
8.5x20	5x108-120 +20 to +45	575.-
9.0x20	5x108-120 +20 to +50	583.-
10.0x20	5x108-120 +20 to +42	598.-
10.5x20	5x108-120 +20 to +48	605.-
11.0x20	5x108-120 +20 to +35	612.-
9.0x22	5x108-130 +20 to +42	737.-
9.5x22	5x108-130 +20 to +48	745.-
10.0x22	5x108-130 +20 to +54	752.-
10.5x22	5x108-130 +25 to +40	759.-
11.0x22	5x108-130 +25 to +46	767.-
11.5x22	5x108-120 +25 to +52	774.-

19"
20"
22"



Silver Machined

Glossy Black

Matt Gun Metal



SL01

Matt Black, Matt Gun Metal, Matt Bronze, Matt Silver



17"
18"
19"
20"



Matt Silver

Matt Black

Matt Gun Metal

Size	PCD / ET	All colors
7.0x17	5x100 +40 / 5x112 +40 / 5x114.3 +40	338.-
7.0x17	5x100-120 +20 to +40	359.-
8.0x17	5x100 +35 / 5x112 +40 / 5x114.3 +40	353.-
8.0x17	5x100-120 +20 to +45	374.-
9.0x17	5x100-120 +20 to +50	381.-
8.0x18	5x100 +40 / 5x108 +40 / 5x112 +40 / 5x114.3 +35/+40 / 5x120 +40	390.-
8.0x18	5x108-120 +20 to +40	411.-
8.5x18	5x100 +42 / 5x108 +42 / 5x112 +35/+42 / 5x114.3 +35/+42 / 5x120 +35/+42	390.-
8.5x18	5x100-120 +20 to +42	411.-
9.5x18	5x114.3 +38 / 5x120 +25/+38	398.-
9.5x18	5x 108-120 +25 to +38	418.-
10.5x18	5x114.3 +25 / 5x120 +25/+38	405.-
10.5x18	5x100-120 +25 to +38	425.-
8.0x19	5x112 +40	445.-
8.0x19	5x100-120 +20 to +40	465.-
8.5x19	5x108 +42 / 5x112 +32/+40/+45 / 5x114.3 +45 / 5x120 +35	445.-
8.5x19	5x108-120 +20-45	465.-
9.0x19	5x120 +20	452.-
9.0x19	5x100-120 +20 to +51	473.-
9.5x19	5x112 +33 / 5x120 +25/+40	452.-
9.5x19	5x108-120 +25 to +40	473.-
10.0x19	5x120 +29	459.-
10.0x19	5x100-120 +20 to +40	473.-
10.5x19	5x120 +35	459.-
10.5x19	5x100-120 +25 to +40	480.-
8.0x20	5x108-120 +20 to +40	575.-
8.5x20	5x105-120 +20 to +45	575.-
9.0x20	5x108-120 +20 to +51	583.-
9.5x20	5x108-120 +15 to +42	590.-
10.0x20	5x108-120 +15 to +48	598.-
10.5x20	5x108-120 +15 to +54	605.-
11.0x20	5x108-120 +0 to +30	612.-
12.0x20	5x108-120 +0 to +40	620.-



SL02

Matt Black, Matt Gun Metal, Matt Silver, Matt Bronze, Gold

Size	PCD / ET	All colors
8.0x18	5x100 +40 / 5x112 +40 / 5x114.3 +40	390.-
8.0x18	5x100-120 +20 to +40	411.-
8.5x18	5x112 +45 / 5x114.3 +35	390.-
8.5x18	5x100-120 +20 to +45	411.-
9.0x18	5x100-120 +20 to +51	418.-
8.0x19	5x112 +40	445.-
8.0x19	5x100-120 +20 to +40	465.-
8.5x19	5x112 +32/+45 / 5x114.3 +45 / 5x120 +35	445.-
8.5x19	5x108-120 +20 to +45	465.-
9.0x19	5x100-120 +20 to +51	473.-
9.5x19	5x120 +40	452.-
9.5x19	5x108-120 +20 to +45	473.-
10.0x19	5x108-120 +20 to +51	473.-
10.5x19	5x108-120 +15 to +57	480.-
8.5x20	5x108-120 +20 to +45	575.-
9.0x20	5x108-120 +20 to +51	583.-
9.5x20	5x108-120 +15 to +42	590.-
10.0x20	5x108-120 +45 to +48	598.-
10.5x20	5x108 -120 +15 to +45	605.-
11.0x20	5x108 -120 +0 to +51	612.-

18"
19"
20"



Matt Silver

Matt Black

Matt Bronze

CONC AVER

CVR2

Platinum Black, Carbon Graphite, Brushed Titanium,
Brushed Bronze, Candy Red



Brushed Titanium

Platinum Black

Brushed Bronze

19"
20"
21"
22"

Size	PCD / ET	All colors
8.0x19	5x108-120 +20 to +40	577.-
8.5x19	5x112 +35/+45 / 5x114.3 +45 / 5x120 +35	593.-
8.5x19	5x108-120 +20 to +45	599.-
9.0x19	5x108-120 +20 to +51	621.-
9.5x19	5x112 +45 / 5x120 +35	637.-
9.5x19	5x108-120 +20 to +45	643.-
10.0x19	5x108-120 +20 to +51	664.-
10.5x19	5x108-120 +15 to +57	686.-
8.0x20	5x108-120 +20 to +40	678.-
8.5x20	5x112 +45 / 5x120 +35	695.-
8.5x20	5x108+120 +20 to +45	700.-
9.0x20	5x112 +45 / 5x120 +35	715.-
9.0x20	5x108-120 +20 to +51	721.-
9.5x20	5x108-120 +22 to +40	742.-
10.0x20	5x112 / 5x120 +45	758.-
10.0x20	5x108-120 +20 to +48	764.-
10.5x20	5x108-120 +15 to +45	786.-
11.0x20	5x108-120 +0 to +30	808.-
12.0x20	5x108-120 +0 to +60	850.-
9.0x21	5x108-130 +10 to +54	800.-
9.5x21	5x108-130 +0 to +61	823.-
10.5x21	5x108-130 +10 to +46	865.-
11.0x21	5x108-130 +11 to +55	886.-
11.5x21	5x108-130 +17 to +59	908.-
9.0x22	5x108-130 +10 to +54	908.-
9.5x22	5x108-130 +0 to +60	930.-
10.0x22	5x108-130 +20 to +64	952.-
10.5x22	5x108-130 +10 to +46	973.-
11.0x22	5x108-130 +11 to +54	995.-
11.5x22	5x108-130 +17 to +61	1015.-

CVR4

Platinum Black, Double Tinted Black, Carbon Graphite,
Brushed Titanium, Brushed Bronze, Candy Red

Size	PCD / ET	All colors
8.0x19	5x112 +40	571.-
8.0x19	5x108-130 +20 to +40	577.-
8.5x19	5x112 +35/+45 / 5x114.3 +45	593.-
8.5x19	5x108-130 +20 to +45	599.-
9.0x19	5x108-130 +20 to +51	621.-
9.5x19	5x112 +45 / 5x120 +35	637.-
9.5x19	5x108-130 +20 to +45	643.-
10.0x19	5x108-130 +20 to +51	664.-
10.5x19	5x108-130 +15 to +57	686.-
8.0x20	5x112 +40	673.-
8.0x20	5x108-130 +20 to +40	678.-
8.5x20	5x112 +45 / 5x120 +35	695.-
8.5x20	5x108-130 +20 to +45	700.-
9.0x20	5x112 +35/+45 / 5x120 +35	715.-
9.0x20	5x108-130 +20 to +51	721.-
9.5x20	5x108-130 +0 to +44	743.-
10.0x20	5x112 +45 / 5x120 +45	758.-
10.0x20	5x108-130 +20 to +48	764.-
10.5x20	5x108-130 +15 to +45	786.-
11x20	5x108-130 +0 to +30	808.-
12x20	5x108-130 +32 to +60	850.-
9.0x21	5x108-130 +10 to +54	800.-
9.5x21	5x112 +35	817.-
9.5x21	5x108-130 +0 to +61	823.-
10.5x21	5x108-130 +0 to +46	865.-
11.0x21	5x108-130 +11 to +55	886.-
11.5x21	5x108-130 +17 to +59	908.-
9.0x22	5x108-130 +10 to +54	908.-
9.5x22	5x108-130 +0 to +60	930.-
10.0x22	5x108-130 +20 to +64	952.-
10.5x22	5x108-130 +10 to +46	973.-
11.0x22	5x108-130 +11 to +54	995.-
11.5x22	5x108-130 +17 to +61	1015.-

19"
20"
21"
22"



Brushed Titanium

Platinum Black

Candy Red

CONC AVER

CVR5

Platinum Black, Double Tinted Black, Carbon Graphite,
Brushed Titanium, Brushed Bronze



19"

20"

21"

22"



Brushed Titanium

Double Tinted Black

Brushed Bronze

Size	PCD / ET	All colors
8.0x19	5x108-130 +20 to +40	577.-
8.5x19	5x112 +45	593.-
8.5x19	5x108-130 +20 to +45	599.-
9.0x19	5x108-130 +20 to +51	621.-
9.5x19	5x108-130 +20 to +45	643.-
10.0x19	5x108-130 +20 to +51	664.-
10.5x19	5x108-130 +15 to +57	686.-
8.0x20	5x108-130 +20 to +40	678.-
8.5x20	5x108-130 +20 to +45	700.-
9.0x20	5x108-130 +20 to +51	721.-
9.5x20	5x108-130 +22 to +40	743.-
10.0x20	5x108-130 +20 to +48	764.-
10.5x20	5x108-130 +15 to +45	786.-
11.0x20	5x108-130 +0 to +30	808.-
12.0x20	5x108-130 +0 to +42	850.-
9.0x21	5x108-130 +10 to +54	800.-
9.5x21	5x108-130 +0 to +61	823.-
10.5x21	5x108-130 +10 to +46	865.-
11.0x21	5x108-130 +11 to +55	886.-
11.5x21	5x108-130 +17 to +59	908.-
9.0x22	5x108-130 +10 to +54	908.-
9.5x22	5x108-130 +14 to +60	930.-
10.0x22	5x108-130 +20 to +64	952.-
10.5x22	5x108-130 +10 to +46	973.-
11.0x22	5x108-30 +11 to +54	995.-
11.5x22	5x108-130 +17 to +61	1015.-

CONC AVER

CVR6

Platinum Black, Double Tinted Black, Carbon Graphite,
Brushed Titanium, Brushed Bronze

Size	PCD / ET	All colors
8.0x19	5x108-120 +20 to +40	577.-
8.5x19	5x112 +45	593.-
8.5x19	5x108-120 +20 to +45	599.-
9.0x19	5x108-120 +20 to +51	621.-
9.5x19	5x108-120 +20 to +45	643.-
10.0x19	5x108-120 +20 to +51	664.-
10.5x19	5x108-120 +15 to +57	686.-
8.0x20	5x108-130 +20 to +40	678.-
8.5x20	5x108-130 +20 to +45	700.-
9.0x20	5x108-130 +20 to +51	721.-
9.5x20	5x108-130 +22 to +40	743.-
10.0x20	5x108-130 +20 to +48	764.-
10.5x20	5x108-130 +15 to +45	786.-
11.0x20	5x108-130 +7 to +48	808.-
12.0x20	5x108-130 +0 to +60	850.-
9.0x21	5x108-130 +10 to +52	800.-
9.5x21	5x108-130 +0 to +58	823.-
10.5x21	5x108-130 +10 to +46	865.-
11.0x21	5x108-130 +11 to +55	886.-
11.5x21	5x108-130 +17 to +59	908.-
9.0x22	5x108-130 +10 to +52	908.-
9.5x22	5x108-130 +0 to +58	930.-
10.0x22	5x108-130 +20 to +64	952.-
10.5x22	5x108-130 +10 to +46	973.-
11.0x22	5x108-130 +11 to +54	995.-
11.5x22	5x108-130 +17 to +61	1015.-

19"
20"
21"
22"



Brushed Titanium

Double Tinted Black

Brushed Bronze

CONC AVER

CVR7

Platinum Black, Double Tinted Black, Carbon Graphite,
Brushed Titanium, Brushed Bronze



19"

20"

21"

22"



Brushed Titanium

Double Tinted Black

Brushed Bronze

Size	PCD / ET	All colors
8.0x19	5x108-130 +20 to +40	577.-
8.5x19	5x112 +45	564.-
8.5x19	5x108-130 +20 to +45	599.-
9.0x19	5x108-130 +20 to +51	621.-
9.5x19	5x108-130 +20 to +45	643.-
10.0x19	5x108 -130 +20 to +51	664.-
10.5x19	5x108-130 +15 to +57	686.-
8.0x20	5x108-130 +20 to +40	678.-
8.5x20	5x108-130 +20 to +45	700.-
9.0x20	5x108-130 +20 to +51	721.-
9.5x20	5x108-130 +22 to +40	743.-
10.0x20	5x108-130 +20 to +48	764.-
10.5x20	5x108-130 +15 to +45	786.-
11.0x20	5x108-130 +0 to +30	808.-
12.0x20	5x108-130 +0 to +60	850.-
9.0x21	5x108-130 +10 to +52	800.-
9.5x21	5x108-130 +0 to +61	823.-
10.5x21	5x108-130 +10 to +46	865.-
11.0x21	5x108-130 +11 to +55	886.-
11.5x21	5x108-130 +17 to +59	908.-
9.0x22	5x108-130 +10 to +52	908.-
9.5x22	5x108-130 +0 to +58	930.-
10.0x22	5x108-130 +20 to +64	952.-
10.5x22	5x108-130 +10 to +46	973.-
11.0x22	5x108-130 +11 to +54	995.-
11.5x22	5x108-130 +17 to +61	1015.-

GT Porsche Forged

Racing Titanium Black (TBKP), Racing Gloss Black (GBP), Racing Brass Gold (RBGP),
 Racing Candy Red (RCRP), Machining & Racing Hyper Black (MHBP),
 Racing Titanium Blue & Ring (TBRP)

Racing Gloss Black (GBP)



19"
 20"
 21"



Racing Titanium Black (TBKP)
 Racing Gloss Black (GBP)
 Racing Brass Gold (RBGP)
 Racing Candy Red (RCRP)

3D engraved logo, alu valve, Special ADVAN hub cap

Size	PCD	Weight	from 1240.-
8.5-12.0x19	CL, 5x130	≥ 9.5 Kg	on request
8.5-12.0x20	CL, 5x112/130	≥ 9.8 Kg	on request
9.5-12.5x21	CL, 5x112/130	≥ 11.2 Kg	on request

Options*:

Machining & Racing Hyper Black (MHBP) +60.-
 Racing Titanium Blue & Ring (TBRP) +35.-



Racing Gloss Black (GBP)



Racing Candy Red (RCRP)



Racing Brass Gold (RBGP)



Racing Titanium blue & Ring (TBRP)

RSIII

Black Gun Metallic & Ring (BGR), Umber Bronze Metallic & Ring (UBR), Racing Candy Red & Ring (CRR), Racing White Metallic & Ring (WMR), Racing Hyper Black & Ring (HBR), Black Chrome (BSP)



Black Gun Metallic & Ring (BGR)

18"
19"

Black Gun Metallic & Ring (**BGR**)
Umber Bronze Metallic & Ring (**UBR**)
Racing Candy Red & Ring (**CRR**)
Racing White Metallic & Ring (**WMR**)
diamant-cut & polished ring, 3D engraved logo,
special decal, alu valve, capless design



Racing White Metallic & Ring (WMR)



Black Gun Metallic & Ring (BGR)



Umber Bronze Metallic & Ring (UBR)



Racing Candy Red & Ring (CRR)

Size	PCD	Weight	from 750.-
7.5-10.5x18	5x100/108/110/112/114.3/120	≥ 7.6 Kg	on request
8.0-9.5x19	5x100/108/112/114.3/120	≥ 8.5 Kg	on request

Options*:

Racing Hyper Black & Ring (HBR)	
Diamant-cut & polished ring	+45.-
Black Chrome (BSP)	+65.-
Hub cap Ø63 or Ø73 ADVAN Racing	+50.-
Cap ring for genuine ornament	+50.-

TC-4

Racing Candy Red & Ring (CRR)



Racing Gun Metallic & Ring (GMR), Black Gun Metallic & Ring (BGR),
Umber Bronze Metallic & Ring (UBR), Racing Candy Red & Ring (CRR),
Racing White Metallic & Ring (WMR)

15"
16"
17"
18"



Racing Gun Metallic & Ring (**GMR**)
Black Gun Metallic & Ring (**BGR**)
Umber Bronze metallic & Ring (**UBR**)
Racing Candy Red & Ring (**CRR**)
Racing White Metallic & Ring (**WMR**)
diamant-cut & polished ring, 3D engraved logo,
special decal, alu valve, capless design

Size	PCD	Weight	from 510.-
5.0-8.0x15	4x100	≥ 5.2 Kg	on request
5.5-8.0x16	4x100, 5x114.3	≥ 5.6 Kg	on request
6.5-9.5x17	4x98/100, 5x100/112/114.3	≥ 7.2 Kg	on request
7.0-11.0x18	4x100, 5x100/112/114.3/120	≥ 7.7 Kg	on request

Options*:

Hub cap Ø63 or Ø73 ADVAN Racing +50.-
Cap ring for genuine ornament +50.-



Racing White Metallic & Ring (WMR)



Black Gun Metallic & Ring (BGR)



Racing Gun Metallic & Ring (GMR)



Umber Bronze Metallic & Ring (UBR)

AFF02

Dark Shiny Black (B), Bronze Metallic (BC), Dark Shiny Black face polished (BP), Black Chrome (SBC), Brushed Clear Coat (BRU)



Dark Shiny Black (B)

19"
20"
21"
22"



Brushed Clear Coat (BRU)

Black Chrome (SBC)

Bronze Metallic (BC)

Dark Shiny Black face polished (BP)

Size		PCD	B - BC - BP	SBC	BRU
8.5x19	C	5x108/110/112/114.3/115/120	485.-	545.-	565.-
9.5x19	DC	5x110/112/114.3/115/120	505.-	565.-	585.-
8.5x20	C	5x110/112/114.3/115/120	545.-	605.-	625.-
9.0x20	C	5x108/110/112/114.3/115/120	565.-	625.-	645.-
10.0x20	DC	5x110/112/114.3/115/120	585.-	645.-	665.-
10.5x20	DC	5x110/112	605.-	-	-
10.0x21	C	5x110/112	615.-	-	-
9.0x22	C	5x108/110	695.-	-	-
10.5x22	DC	5x110/112/130	715.-	-	-

TYPE Shape of rim spoke: **C** concave, **DC** deep concave

AFF09

Dark Shiny Black (B), Bronze Metallic (BC),
Dark Shiny Black face polished (BP), Liquid Silver face polished (SP)

Dark Shiny Black (B)



19"
20"



Size	PCD	B - BC - BP - SP
8.5x19	C 5x108/110/112/114.3/115/120	495.-
9.5x19	DC 5x110/112/120	515.-
8.5x20	C 5x110/112/114.3/115/120	565.-
9.0x20	C 5x108/110/112/114.3/115/120	585.-
10.0x20	DC 5x110/112/114.3/115/120	605.-
10.5x20	DC 5x110/112	615.-

TYPE Shape of rim spoke: **C** concave, **DC** deep concave



Dark Shiny Black (B)



Bronze Metallic (BC)



Liquid Silver
face polished (SP)



Dark Shiny Black
face polished (BP)

FF193

Shiny Black, Gloss Gunmetal Silver



19"
20"



Shiny Black (SB)



Gloss Gunmetal Silver (GGS)



Shiny Black (SB)

Size	PCD	SB - GGS
8.5x19	5x110/112/114.3/115	445.-
10.0x19	5x110/112	475.-
9.0x20	5x110/112	495.-
10.0x20	5x110/112	525.-

FF096

Matt Dark Grey, Matt Black, Matt Bronze

Matt Bronze (MBR)



18"
19"



Size	PCD	MDG - MB - MBR
8.5x18	5x110/112	415.-
8.5x19	5x108/110/112/114.3/115/120	445.-
9.5x19	5x110/112/120	475.-
10.5x19	5x120	495.-



Matt Dark Grey (MDG)

Matt Black (MB)

Matt Bronze (MBR)

FF047

Shiny Black, High Gloss Silver



18"
19"



Shiny Black (SB)



High Gloss Silver (S)



Shiny Black (SB)

Size	PCD	S - SB
8.0x18	5x98/100	295.-
8.5x18	5x110/112/114.3/115	305.-
8.5x19	5x110/112/114.3/115	335.-

SA-25R

Worth Black Clear engraved logo (WBC)



Worth Black Clear engraved logo (WBC), Metal Black polished edge engraved logo (MBF), Platinum Silver Black engraved logo (PSB), Blue Light Chrome II (BLCII), Red Light Chrome (RLC)

15"
16"
17"
18"
19"
20"



Worth Black Clear (WBC), engraved logo

Size	PCD	Weight	from 385.-
5.0-6.0x15	4x100	≥ 5.1 Kg	on request
5.0-7.0x16	4x100, 5x100/114.3	≥ 5.7 Kg	on request
7.0-7.5x17	4x100, 5x100/114.3	≥ 7.6 Kg	on request
7.0-9.5x18	5x100/114.3	≥ 7.9 Kg	on request

Metal Black, polished edge (MBF), engraved logo

Platinum Silver Black (PSB), engraved logo

Size	PCD	Weight	from 385.-
8.0-9.5x19	5x112/114.3	≥ 8.9 Kg	on request
8.5-9.5x20	5x114.3	≥ 10.0 Kg	on request

Options*:

Platinum Silver Black (PSB)	+40.-
Blue Light Chrome II (BLCII)	+130.-
Red Light Chrome (RLC)	+130.-



Platinum Silver Black engraved logo (PSB)



Metal Black polished edge engraved logo (MBF)



Blue Light Chrome II (BLCII)



Red Light Chrome (RLC)

RN-05M

Gloss Black engraved logo (GB), Gold engraved logo (G)



18"
19"



Gloss Black
engraved logo
(GB)



Gold (G)



Size	PCD	Weight	from 580.-
7.5-10.0x18	5x100/112/114.3/120	≥ 8.8 Kg	on request
8.0-10.5x19	5x112/114.3	≥ 9.7 Kg	on request

TC-105X

Titan engraved logo capless design (T)

Titan engraved logo capless design (T)



15"
16"
17"
18"



Size	PCD	Weight	from 580.-
7.0x15	4x100	≥ 5.0 Kg	on request
7.0x16	4x100, 5x100	≥ 5.5 Kg	on request
7.5-9.5x17	4x100, 5x100/114.3	≥ 6.8 Kg	on request
8.0-11.0x18	5x100/112/114.3/120	≥ 7.4 Kg	on request

Options*:

Hub centric center cap WedsSport
54.1 / 56.1 / 57.1 / 60.1 / 64.1 / 66.1 / 67.1

+55.-





DRAGO

Hellcat Black hub cap with PCD cover (HCB),
Satin Black hub cap with PCD cover (SB),



19"
20"
21"

Satin Black (SB)



Satin Black (SB)



Hellcat Black (HCB)

Size		ET	PCD	from 640.-
8.5x19	C 30 mm	20-55	5x100-130	on request
10.0x19	DC 60 mm	20-50	5x100-130	on request
9.0x20	C 30 mm	25-65	5x100-130	on request
9.0x20	DC 60 mm	00-35	5x100-130	on request
10.5x20	DC 60 mm	15-50	5x100-130	on request
11.0x20	C 30 mm	50-85	5x100-130	on request
11.0x20	DC 60 mm	20-50	5x100-130	on request
12.0x20	EC 66 mm	40-60	5x100-130	on request
9.0x21	C 30 mm	18-51	5x100-130	on request
10.5x21	DC 60 mm	15-45	5x100-130	on request
11.5x21	DC 60 mm	20-60	5x100-130	on request

Options*:

Hub centric without PCD cover: on request

C: Concave design

DC: Deep concave design

EC: Extreme concave design



TWENTYONE

Gloss Black (GB), Gloss Bronze face brushed (BZ),
Titan face brushed (TI)

Gloss Black (GB)



19"
20"
21"



Size		ET	PCD	from 660.-
8.5x19	C 35 mm	20-47	5x98-120	on request
8.5x20	C 35 mm	20-47	5x105-130	on request
9.5x20	C 35 mm	32-55	5x108-130	on request
9.5x20	DC 65 mm	03-37	5x108-120	on request
10.5x20	DC 65 mm	15-47	5x108-130	on request
9.5x21	C 34 mm	15-55	5x108-130	on request
11.0x21	DC 63 mm	22-56	5x108-130	on request
11.5x21	DC 63 mm	25-62	5x108-130	on request

C: Concave design

DC: Deep concave design



Gloss Black (GB)

Titan face brushed (TI)

Gloss Bronze
face brushed (BZ)

rotiform™ Prices on request

LAS-R

TUF-R

SGN

DTM



AERODISC
DESIGN ON REQUEST

Colors on request



OFF ROAD

Prices on request



BLACK RHINO™ HARD ALLOYS

Tusk



Shogun



Barricade



FUEL® O F F - R O A D

Shok



Tech D670



Covert D694



ADVAN
YOKOHAMA



ADVAN
A052

MOTORSPORT

YOUR PASSION, OUR PASSION



www.
ravasicorse-shop.ch

DLW®



adm
Authentic Design Machined

EVOCorse

O-Z®

ADVAN Racing



AL
wheels



CONCAVER



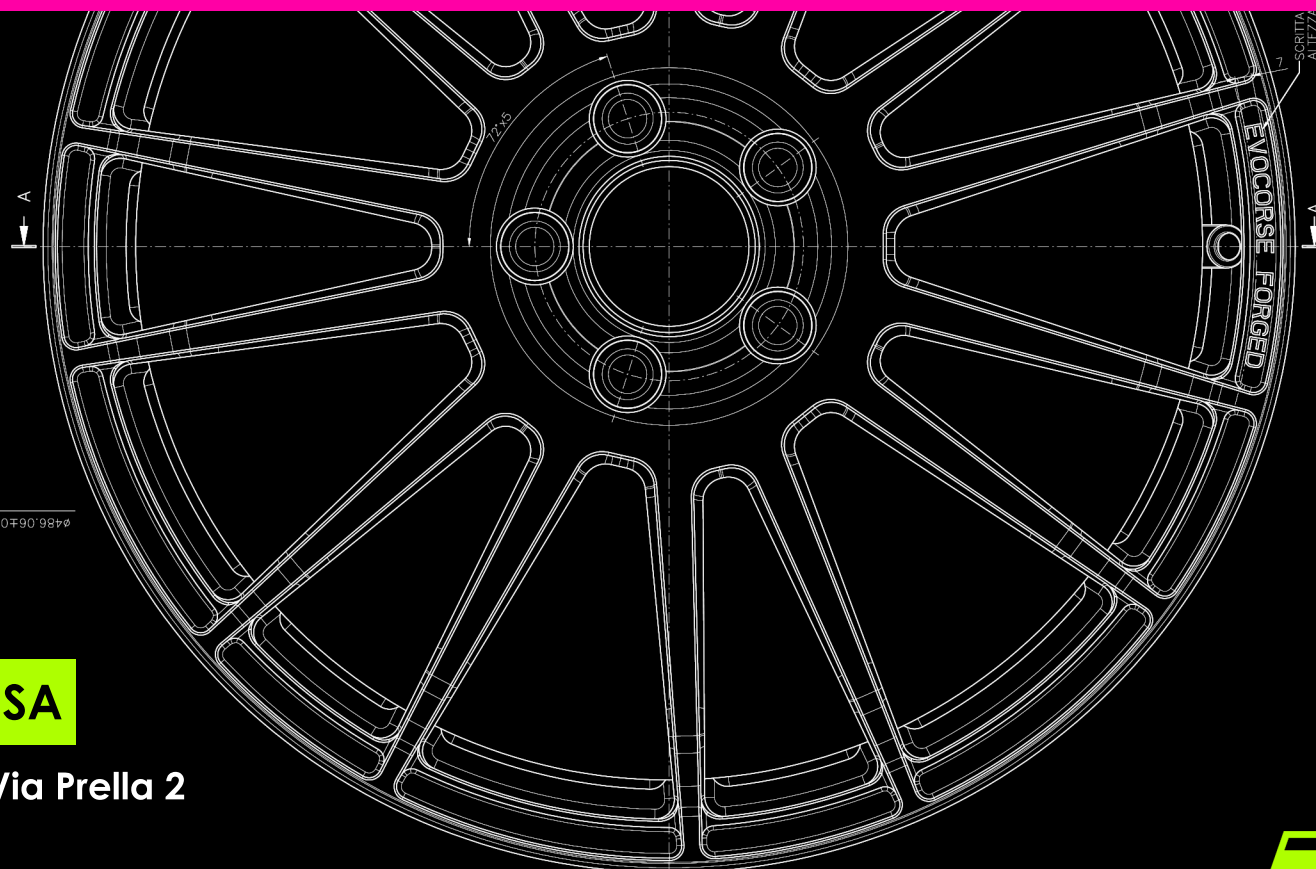
Schmidt

WedsSport

sparco

rotiform.

FUEL
OFFROAD



MARIO RAVASI SA

6852 Genestrerio - Via Prella 2

Tel. 091 647 25 03

International +41 91 647 25 03

E-mail info@ravasicorse.ch

www.ravasicorse.ch / www.ravasicorse-shop.ch

